

■ Volunteer activities

Connect to society and deepen learning

The Volunteer Center is the place where we put into practice the “Do for Others” educational philosophy of Meiji Gakuin University. It provides support so that all volunteers and students with an interest in social issues can enhance their studies through a wide range of activities.

■ We support your willingness to “give it a go”!

○ We introduce the volunteers

There is a lot of volunteer information in the center. Information is announced via Port Hepburn, the Volunteer Center website, and signboards, etc.

○ We offer consultations regarding volunteer activities

University staff and specialist coordinators are able to offer advice. Please feel free to talk to us when you feel that “I want to try volunteering,” “I want to launch a new activity,” and “I have a problem in carrying out my activities.”

○ We enhance “learning” through volunteering

By seeing the practice of volunteering a part of the university’s educational cycle, the Meiji Gakuin University offers its Education Partnership Volunteer Certificate Program with the objective of enhancing the learning of each of the students by connecting volunteering to learning in specialist fields.

■ The first step “1 Day for Others”

For those of you who would like to start by doing something, but don’t know where to start - “1 Day for Others” is a program in which Meiji Gakuin University students visit communities, NPOs, NGOs, companies, etc. near their campus to experience volunteering or interning for one day. We hope you will use this as an opportunity to take action yourself to master a variety of abilities such as leadership and communication skills, etc.

■ Practice of “Do for Others” through student members

Student members are partners in the operation of the Volunteer Center.

They each tackle section activities and sometimes collaborate across the boundaries of the sections.

Section name	Content
Regional activities	Cooperate with people living near the campus to tackle activities as a member of the community
MG Pearls	Environmental protection activities through producing and selling accessories using the pearls from Borneo in Malaysia
“Do for Smile @ East Japan” project	Reconstruction support activities launched after the earthquake disaster on 3.11 (Otsuchi township and Rikuzentakata City in Iwate Prefecture)
Meiji Gakuin Red Cross	Activities based on the Joint Declaration with the Japan Red Cross Society
Overseas Program Office	Confront and search for solutions to issues in the international community

■ Diverse programs to support your growth

Program name	Content
Volunteer Fund Student Challenge Award	A scholarship unique to this university for supporting independent volunteer activities
“Program that allows students to gain experience at international organizations”	Internships for 100 hours at international institutions in the Yokohama Minato Mirai area (implemented in the summer break and spring break periods)

■ Obtain “volunteer insurance” when you participate in volunteer activities

Volunteer insurance provides compensation in cases where a volunteer is injured, or causes injury to others, during an activity. For safety’s sake, please ensure that you take out this insurance before participating. Note that we regularly carry out the procedures to take out insurance on your behalf at the Volunteer Center. * The university takes out insurance for “1 Day for Others” and the other programs organized by the Volunteer Center. We ask independently acting volunteers to please take out insurance through the Social Welfare Council, etc.

Volunteer Center

Shirokane TEL 03-5421-5131 (Building 10, 1F)

Yokohama TEL 045-863-2056 (Building 4, 1F)

URL <https://www.meijigakuin.ac.jp/volunteer>

Facebook <https://www.facebook.com/mgu.vc>

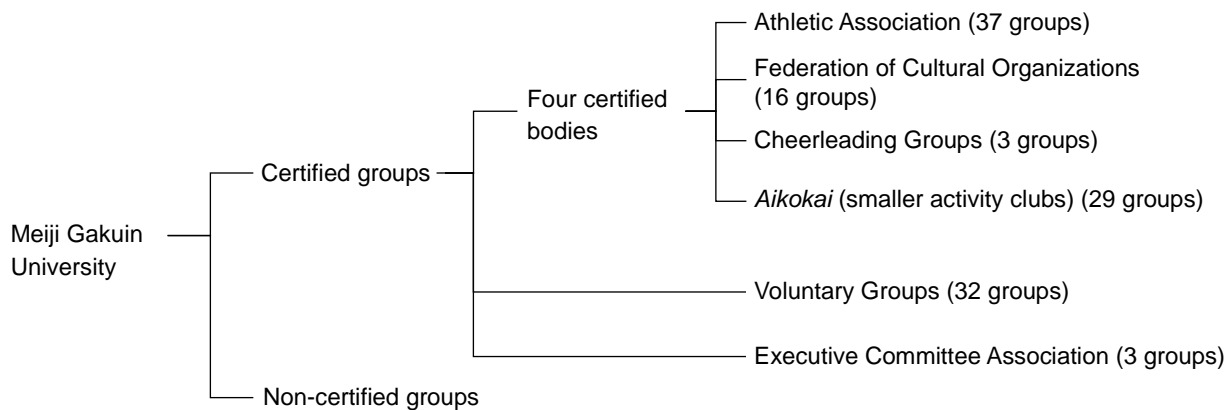
Twitter @mgvc2011

■ Extracurricular activities

The university's extracurricular activities are intended to cultivate a rich humanity in students that promotes responsible behavior by allowing them to participate in independent activities and exchanges. The university students to actively engage in extracurricular activities to enhance student life.

■ Certified groups

In Meiji Gakuin University clubs, there are two types of groups: certified groups and other groups (non-certified groups).



○ Certified groups

Certified groups are clubs that have been officially recognized by the university and that can receive various types of support from the university. They are obligated to submit various notifications and financial reports to the university. The certified groups are further divided into four certified bodies (Athletic Association, Federation of Cultural Organizations, Cheerleading Groups and Aikokai) and voluntary groups.

These groups have priority in reservations for classrooms, athletic facilities and cultural facilities, and they receive funding. In addition, if an injury occurs in their activities outside the university, they are covered by accident insurance if the activity was approved by the Student Affairs Office.

○ Non-certified groups

These groups do not have to submit reports to the university, and they do not receive support from the university. Members are responsible for all their own plans and actions. When these groups engage in activities outside the university, it is up to them to organize their own insurance in case of injuries etc.

■ Establishment of certified groups

To establish a certified group it is necessary to follow the procedure below.

- ① Submit an Application to Prepare for Establishment. (Submission period: April 1 to 30 each year.)
- ② If as a result of the screening your group is designated as a group that is preparing for establishment, properly engage in activities for a one-year period.
- ③ Submit an Interim Activities Report. <Submission period: October 1 to October 31 each year>
- ④ The following year, submit an Application for Designation as a Certified Group in order to receive designation as a certified group. (Submission period: April 1 to 15 each year) (Refer to the Student Affairs Department regarding the application documents.)

When the Application for Designation as a Certified Group is submitted, the following three criteria must also be satisfied.

- 1) In principle, there must be at least eight members, including members from at least two academic years.
- 2) There is a full-time faculty member as an advisor.
- 3) The group has defined articles of association.

Please contact the Student Affairs Department concerning the application method, timing, etc.

■ Shirokane Festival

The university festival known as the Shirokane Festival is held at the Shirokane Campus annually from November 1 to November 3.. It provides an opportunity for many groups (both certified and non-certified) to hold performances and other activities.

■ Totsuka Festival

The Totsuka Festival is held at the Yokohama campus annually in late May. This is a community festival produced through the cooperation of students, the local community and university staff. With the overall themes of the environment, social welfare and internationality, the festival is open to the local community.

■ Project to strengthen Meiji Gakuin sports (called the “Sports Project”)

The Sports Project was begun in April 2005 and selects specific strong clubs which are practicing regularly in order to achieve a high quality of play.

The Student Affairs Division handles inquiries concerning extracurricular activities.

Shirokane TEL 03-5421-5155 (Main Building, 1F)

Yokohama TEL 045-863-2030 (Building 1, 1F)

URL https://www.meijigakuin.ac.jp/campuslife/extracurricular_activities/



Clubs

The clubs active as Meiji Gakuin University certified groups are shown below.

As of April 1, 2019

Athletic Association

Approximately 1,500 students are members.

Aikido Club	Figure Skating Club	Ice Hockey Club	American Football Club
Karate Club	Kyudo Club	Competitive Dance Club	Kendo Club
Golf Club	Football Club(Soccer)	Auto Club	Shooting Club
Judo Club	Shorinji Kempo Club	Swim Club	Ski Team
Soft Tennis Club	Table Tennis Club	Lawn Tennis Club	Nanshiki Baseball Club*
Nihon Kempo Club	Basketball Club	Badminton Club	Volleyball Club
Handball Club	Fencing Club	Futsal Club	Boxing Club
Motorboat and Waterskiing Club	Baseball Club	Archery Club	Sailing Club
Rugby Club	Men's Lacrosse Club	Women's Lacrosse Club	Track and Field Club
WanderVogel (Rambling) Club			

Federation of Cultural Organizations

Approximately 900 students are members.

Acoustic Minds	E.S.S (English Speaking Society)	Theater Research Club	Orchestra
Glee Club	L.M.S.	Advertising Society	Child Education Society
Cinema Society	Photography Club	Life Arts Society	Art Club <i>Hakubikai</i>
Stage Academy	Literature Club	Mandolin Club	Travel Society (suspended)

Cheerleading Groups

Approximately 40 students are members.

Leader Club	Cheerleading Club	Brass Band Club
-------------	-------------------	-----------------

Aikokai (Smaller activity clubs)

Approximately 1,000 students are members.

Sports	Academic/Cultural	Travel	Music
Abend Ski Club (suspended)	Announce Kenkyukai	Car Tourist Club	Classic Guitar Society
Austria Ski Club	English Society	Cycling Club	Light Music Club (L.M.C)
Aikokai Kendo Club (suspended)	OPENROOM	Sansuikai	CHOR DIE SONNE
Shirokane Sports Association	Club Arts	Travel Society	Symphonic Band
Scuba Diving Club (suspended)	Tea Ceremony Club	Train Travel Aikokai	World Ethnic Music Society
Sports Aikokai	Puppet Troupe ZOO (suspended)	Hiking Aikokai	Song Lights
Aikokai Soft Tennis Club	Meigaku Little Theater	Remote Island Society	
Aikokai Badminton Club	Rakugo Society		
Playing Tennis Association	Habitat MGU		

* As a general rule, 'aikokai' tend to be somewhat smaller, newer and more informal than associations and organizations.

Executive Committee Association

Approximately 250 students are members.

Shirokane Festival Executive Committee	Totsuka Festival Preparation Committee	Freshmen Orientation Executive Council
--	--	--

■ Voluntary Groups

Approximately 1,800 students are members.

Sports	Cultural	Society, Social Welfare, International
Shirokane Football Club (soccer)	Contemporary Music Club	Braille Transcription Society
Shirokane Shukyukai (soccer)	Jazz Society	Sign Language Club Pokke
A.C.S. Liberty (suspended)	Shirokane Bell Harmony Ringers	NYANCO
STING	Hepburn Bible Society	JUNKO Association
Orange Tennis Club	Manga Society UCA	Peace ☆ Ring
PIQUE SKI TEAM	Shohokai	pocket
Surfing Club Grade A (suspended)	Planning and Production Club Dream Factory (suspended)	OPEN ROOM
Volleyball Club Cherries	Green Tea Appreciation Society	
AKUSTOT	Natural Science Society (suspended)	
Heart Beat	Yoga & Health Association	
Break Jam	Gospel Choir	
Sports SHOW☆GO!!!	Musik Spiel	
	Farm Aikokai	
	Meiji Gakuin University PNS	

