

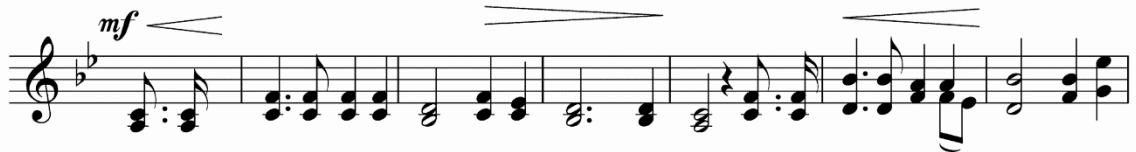
# 明治学院校歌

島崎藤村 作詞  
前田久八 作曲

Moderato



ひ と の よ の わ か き い の ち の あ さ - ぼ ら け



が く い ん の か ね は ひ び き て わ れ ひ と の む - ね う つ



と こ ろ し ろ か ね の お か に ね ぶ か く き ね



ん じ ゅ の た て る を - み - よ や み ど り ば は に お ひ あ



ふ れ て わ か も の の お も ひ を つ た う こ こ ろ



せ よ ま な び の と も - よ あ た ら し き と き よ は



ま て り も ろ と も に と お く の ぞ み て お の

がじしみーちをひらかんそらあらばそらをき  
 わめんつちあらばつちにもーいーきんあ  
 あゆーけたたかーえおおしかれーめ  
 さめよたてーよおそーるるなかーれ

人の世の若き<sup>いのち</sup>生命のあさぼらけ

学院の鐘は響きてわれひとの胸うつところ

白金の丘に根深く記念樹の立てるを見よや

緑葉は香ひあふれて<sup>わかもの</sup>青年の思ひを伝ふ

心せよ学びの友よ新しき<sup>ときよ</sup>時代は待てり

もろともに遠く望みておのがじし道を開かむ

霄<sup>そら</sup>あらば霄<sup>そら</sup>を窮<sup>きわ</sup>めむ壤<sup>つち</sup>あらば壤<sup>つち</sup>にも活きむ

ああ行けたたかへ<sup>おお</sup>雄雄しかれ

眼さめよ起てよ<sup>おそ</sup>畏るるなかれ

# 明治学院大学応援歌

## 『光の園』

岡本文夫 作詞

浅香 淳 作曲

*mf*

1 ま だ あ け や ら ぬ と ー か い の  
2 せ い な る し と の も り ふ か く

あ ら な み い わ に く だ ー く と き  
め ぎ め て た ち し さ ん ー ぜ ん の

*mp*

い り え を の ぞ ー む せ ん と ー は  
だ い コ ー ラ ス ー は こ だ ま せ り

*mf*

へ き く う は る か れ い め い に  
は く あ を つ つ む あ さ ぎ り に

*f*

じ ゆ う ー の か ね を う ち な ら す  
チャ ペ ル の も り は あ け そ め ぬ

*ff*

お お ホ ー リ ー ピ ーク わ ー れ ら が ぼ こ う め い

*f*

が く め い が く め い ー じ が く い ん

# 明治学院大学応援歌

## 『光の園』

一、未だ明けやらぬ東海の

激浪岩に砕く時

入り江を望む尖塔は

碧空遙か黎明に

自由の鐘を打ちならす

おお聖峰

我等が母校

明学 明学 明治学院

二、聖なる使徒の森深く

目醒めて起ちし三千の

大合唱は木霊せり

白亜を包む朝霧に

礼拝堂の森は明けそめぬ

(以下繰り返し)

四、白雲散切れ飛ぶ所

光の園に集いてし

希望溢るる若人の

掲ぐ紫紺の大旆は

愛と正義の白十字

(以下繰り返し)

三、起て若人よ我が盟友よ

今ぞ雄覇の時到来

白薔薇香る聖苑に

へボンの像は囁けり

汝時代の先駆たれ

(以下繰り返し)

五、見よ精鋭の行く処

白虹天を貫きて

力溢るる若人の

頭上燦たる桂冠に

大日輪は輝けり

(以下繰り返し)

## Yokohama Campus

### ① Building 1

- 4F-5F Labs
- 3F Center for Liberal Arts Common Lab /  
Institute for the Study of Liberal Arts / Training Rooms  
Common Labs (English, French Literature, Economics,  
Sociology and Social Work,  
Faculty of Law (Special TA Room), Psychology,  
Teacher Certification Courses)
- 2F Academic Affairs Department /  
Student Affairs Department /  
Harassment Counseling and Support Center /  
Student Support Center / Conference Room /  
Department of Art Studies Common Lab /  
Office for International Programs (Faculty of Economics) /  
Office for International Programs (Faculty of Law)
- 1F

### ⑤ Building 5

- 1-4F Classrooms
- 2F Information Technology Center /  
Career Center / Music Study Room 1 /  
Clara Lounge (student lounge)
- 1F Faculty of Psychology Lab Preparation Room /  
Faculty of Psychology Experiment/Training Preparation Room /  
Computer Labs 510

### ⑧ Building 6

- 2F Faculty Staff Lounge /  
National Examination Preparation Room
- 1-5F Classrooms

### ⑦ Building 7

- 1-2F Classrooms

### ⑨ Building 9

- 1-3F Classrooms
- 1F Co-op Bakery

### ⑧ Building 8

- 5F Labs / Classrooms /  
Institute for Christian Studies / Common Labs
- 4F Labs / Classrooms
- 3F Graduate School's Office /  
Major of International Studies Common Lab (1)(2) /  
Faculty of International Studies Reference Rooms /  
International Peace Research Institute Annex /  
Computer Room
- 2F Faculty of International Studies Office /  
Conference Room/ Institute for International Studies /  
Classrooms
- 1F International Lounge / Tea Room (Meishosha) /  
Cafe / Commons 8

### ② Building 2

- 4F Chemistry Student Lab /  
Elementary School Course Lab 3
- 3F Biology Student Lab /  
Elementary School Course Lab 2
- 2-4F Labs
- 2F Physics Student Lab /  
Elementary School Course Lab 1 /  
Arts and Crafts Room /  
Home Economics Room
- 1F Student Consulting Center /  
Music Study Room 2, Piano Practice Room

### ③ Building 3

- 3F Classrooms
- 2F Computer Labs
- 1F Computer Labs /  
Faculty of Psychology Training Preparation Room

### ④ Building 4

- 4F Computer Labs
- 2-4F Classrooms
- 1F 1F Volunteer Center  
Y'ins (Computer Labs)

### ⑩ Building 10

- 2-5F Classrooms
- 1F International Center  
International Center Commons

### ⑪ Building A

- 2F General Affairs Office /  
Property Custodian's Office /  
Conference Rooms /  
MGS General Counter

### ⑫ Building B

- Health Support Center

### ⑬ Gymnasium

- Health & Sports Science Lab /  
Reception (Building Manager's Room) /  
Seminar Room /  
1F to 3F /  
Training Floor

### ⑬ Building C

- MG Café / Cafeteria /  
Support Counter /  
Meiji Gakuin Service

### ⑭ Building D

- Lounge

### ⑮ Building E

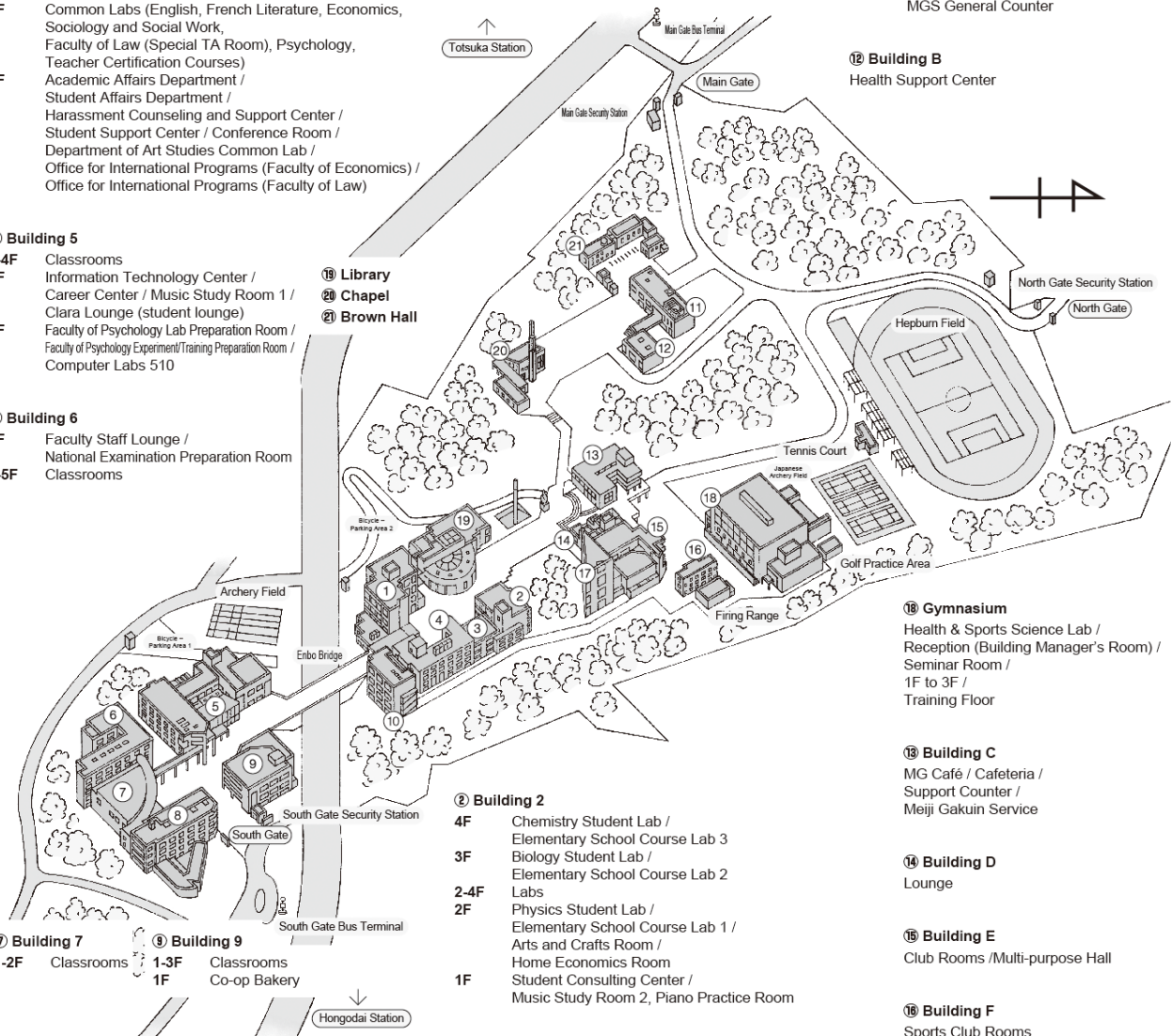
- Club Rooms / Multi-purpose Hall

### ⑯ Building F

- Sports Club Rooms

### ⑰ Building G

- 2-5F Club Rooms
- 1F Co-op Shop



Note: Due to the renovation of the senior high school building, to reach Building 13 from March 2020 to August 2022, please use the outside stairs on the side of the ground next to Building 3 and go through the ground (next to the high school temporary school building). If you are using a wheelchair or need assistance otherwise, please contact the high school office (03-5421-5011) or the main gate security station (03-421-5192) in advance.

## ■ Shirokane Campus

### ⑧ Building 7 (Hepburn Hall)

- 5-11F Labs
- 10F Social Surveys Training /  
Social Welfare Practical Training Center
- 8F Department of Current Legal Studies Common Lab
- 7F Department of French Literature Common Lab
- 6F Department of Education and Child Development  
Common Lab
- 5F Department of English Common Lab /  
Faculty of Law Special TA Room
- 2-4F Graduate School Classrooms
- 3F Graduate School Classrooms /  
Major Common Lab
- 2F Graduate School Office / Major Common Lab
- 1F Faculty Staff Lounge
- B1F Computer Labs

### ② Building 2

- B1-3F Classrooms
- 1F International Center /  
Office for International Programs (Faculty of Economics) /  
Office for International Programs (Faculty of Law)

### ⑨ Palette Zone Shirokane

- Inner Square "SaN-SuN" / Art Hall /  
Co-op Shop / Dining Lounge / Arena /  
Extracurricular Activity Facilities

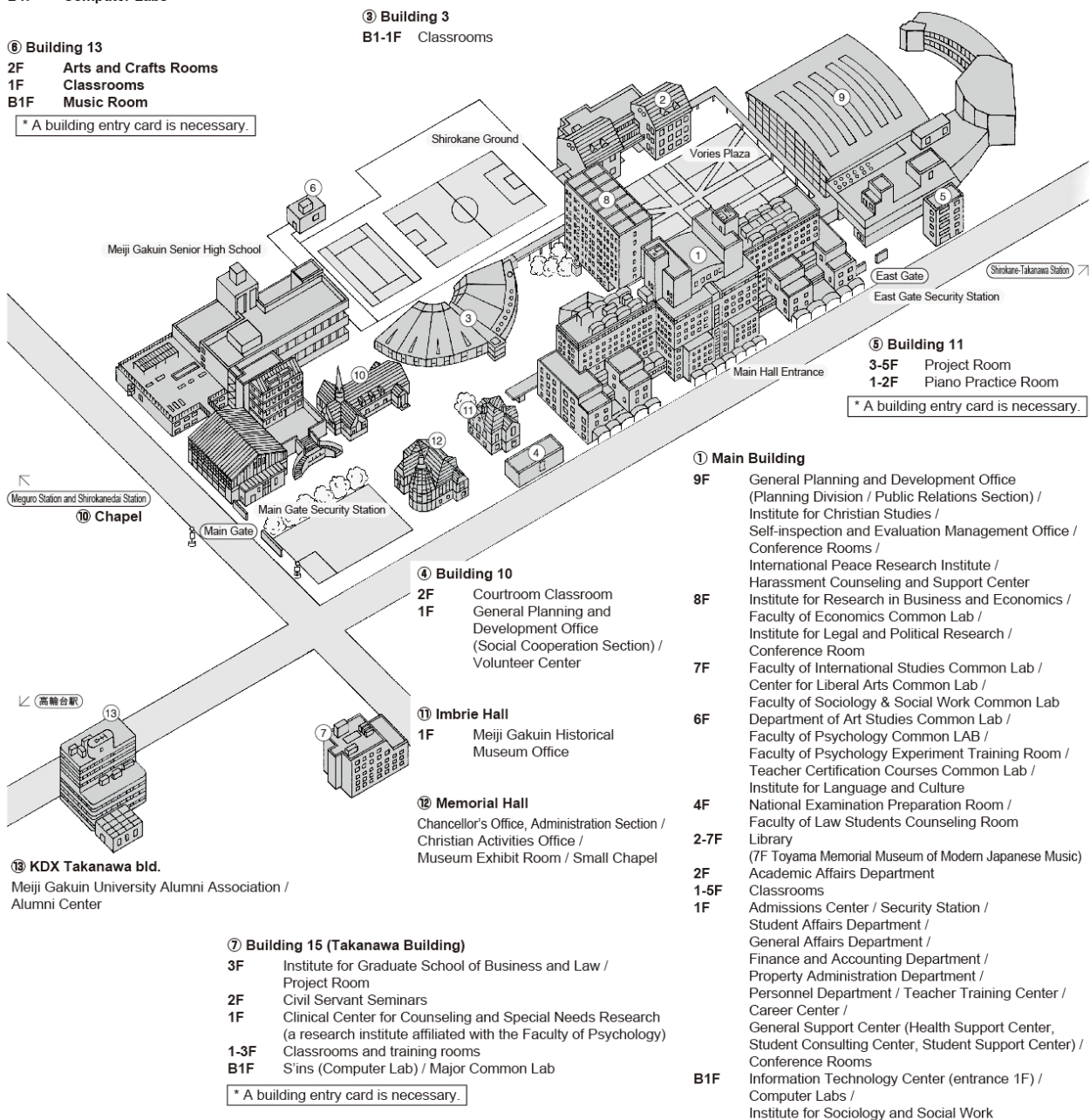
### ⑥ Building 13

- 2F Arts and Crafts Rooms
- 1F Classrooms
- B1F Music Room

\* A building entry card is necessary.

### ③ Building 3

- B1-1F Classrooms



- ### ⑤ Building 11
- 3-5F Project Room
  - 1-2F Piano Practice Room

\* A building entry card is necessary.

### ① Main Building

- 9F General Planning and Development Office  
(Planning Division / Public Relations Section) /  
Institute for Christian Studies /  
Self-inspection and Evaluation Management Office /  
Conference Rooms /  
International Peace Research Institute /  
Harassment Counseling and Support Center
- 8F Institute for Research in Business and Economics /  
Faculty of Economics Common Lab /  
Institute for Legal and Political Research /  
Conference Room
- 7F Faculty of International Studies Common Lab /  
Center for Liberal Arts Common Lab /  
Faculty of Sociology & Social Work Common Lab
- 6F Department of Art Studies Common Lab /  
Faculty of Psychology Common LAB /  
Faculty of Psychology Experiment Training Room /  
Teacher Certification Courses Common Lab /  
Institute for Language and Culture
- 4F National Examination Preparation Room /  
Faculty of Law Students Counseling Room
- 2-7F Library  
(7F Toyama Memorial Museum of Modern Japanese Music)
- 2F Academic Affairs Department
- 1-5F Classrooms
- 1F Admissions Center / Security Station /  
Student Affairs Department /  
General Affairs Department /  
Finance and Accounting Department /  
Property Administration Department /  
Personnel Department / Teacher Training Center /  
Career Center /  
General Support Center (Health Support Center,  
Student Consulting Center, Student Support Center) /  
Conference Rooms
- B1F Information Technology Center (entrance 1F) /  
Computer Labs /  
Institute for Sociology and Social Work

### ④ Building 10

- 2F Courtroom Classroom
- 1F General Planning and  
Development Office  
(Social Cooperation Section) /  
Volunteer Center

### ⑪ Imbrie Hall

- 1F Meiji Gakuin Historical  
Museum Office

### ⑫ Memorial Hall

- Chancellor's Office, Administration Section /  
Christian Activities Office /  
Museum Exhibit Room / Small Chapel

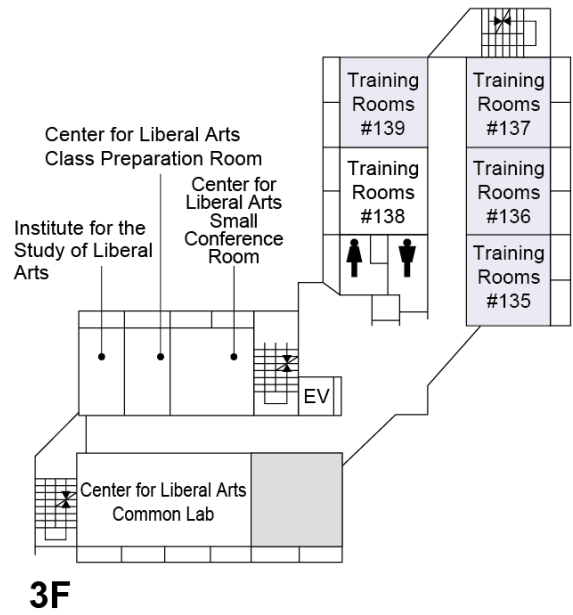
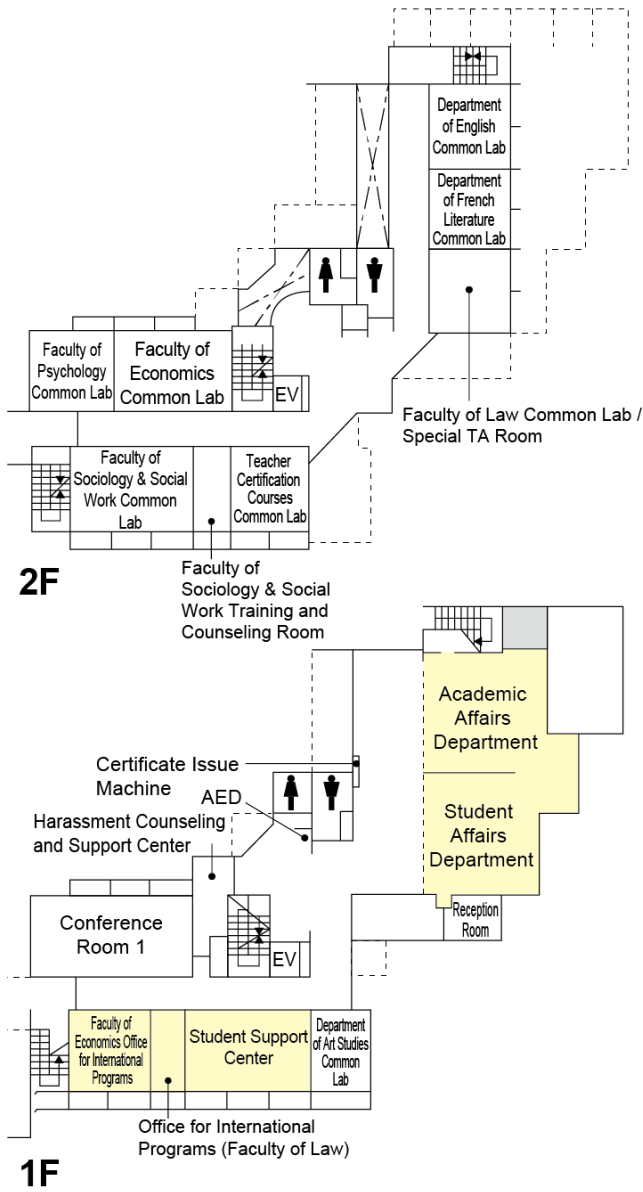
### ⑦ Building 15 (Takanawa Building)

- 3F Institute for Graduate School of Business and Law /  
Project Room
- 2F Civil Servant Seminars
- 1F Clinical Center for Counseling and Special Needs Research  
(a research institute affiliated with the Faculty of Psychology)
- 1-3F Classrooms and training rooms
- B1F S'ins (Computer Lab) / Major Common Lab

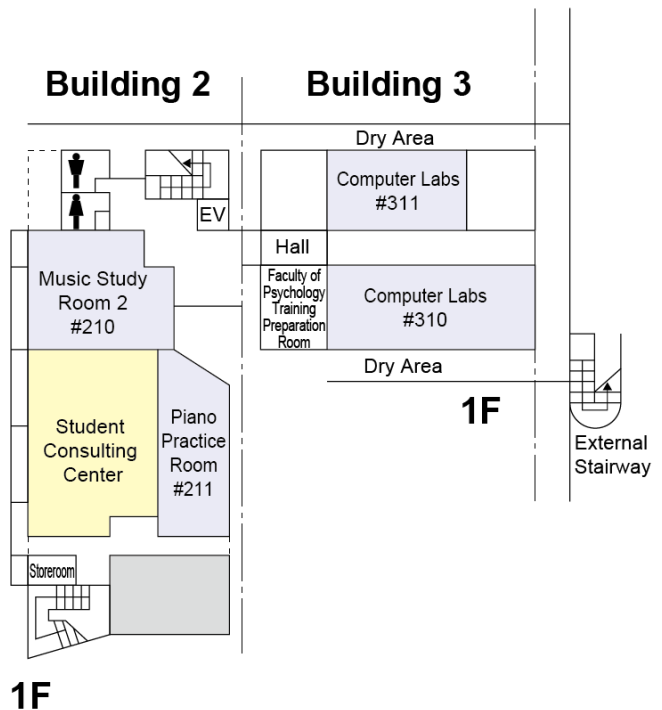
\* A building entry card is necessary.

■ Yokohama Campus Building Layouts

**Building 1**

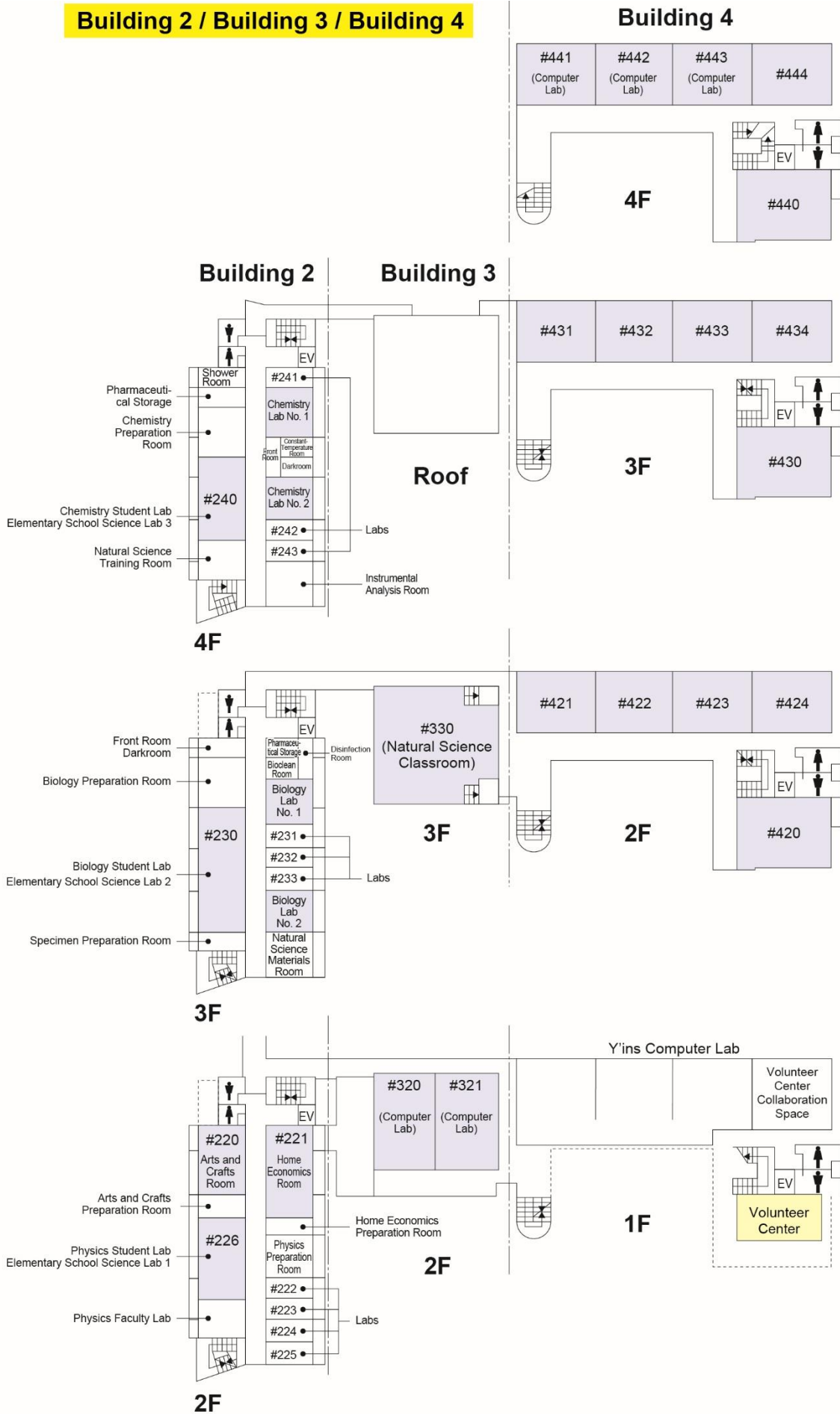


**Building 2 / Building 3**



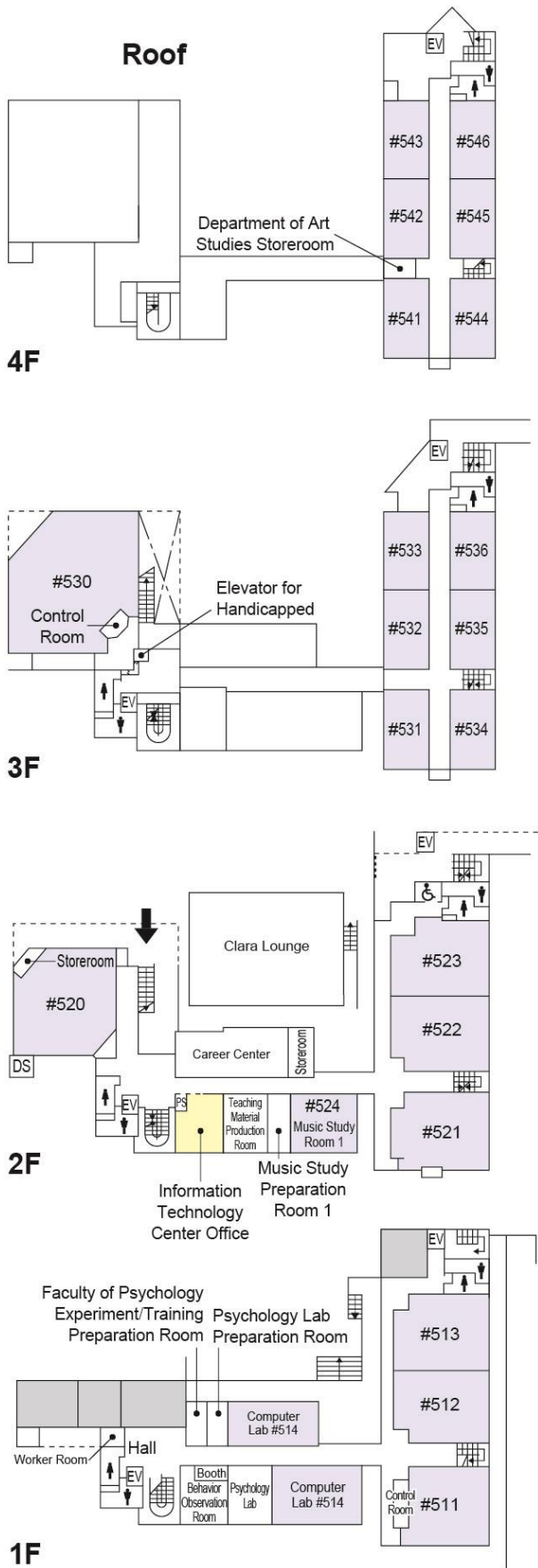


**Building 2 / Building 3 / Building 4**

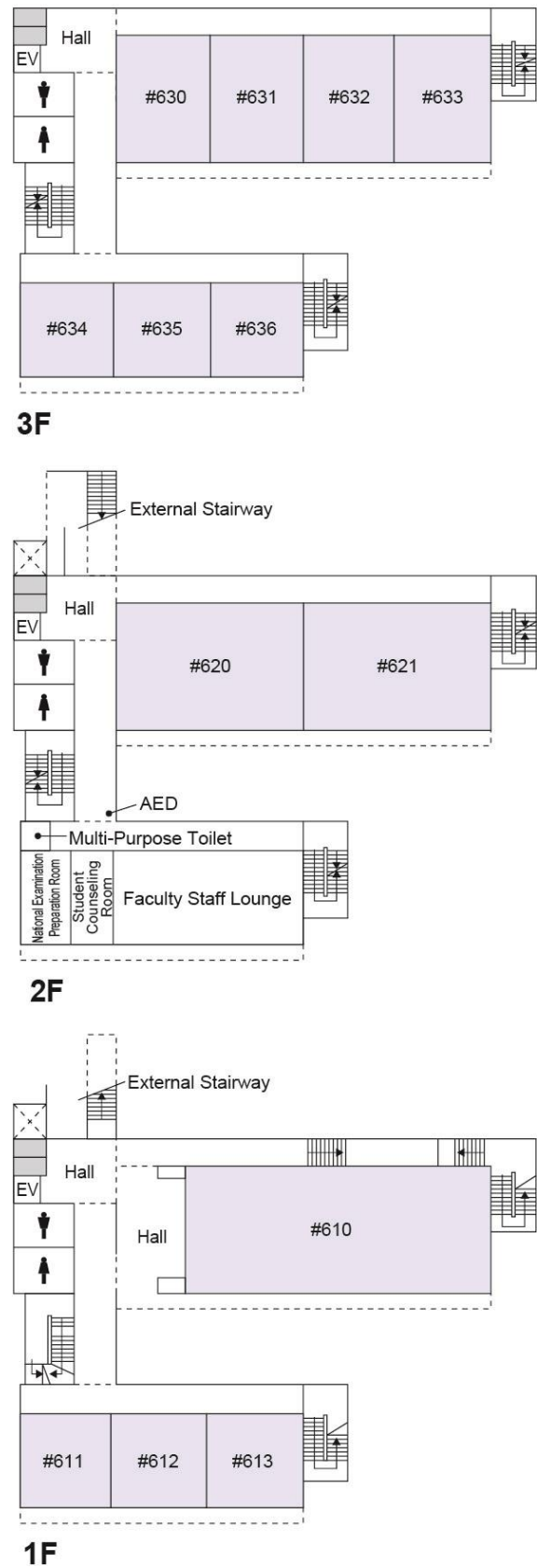




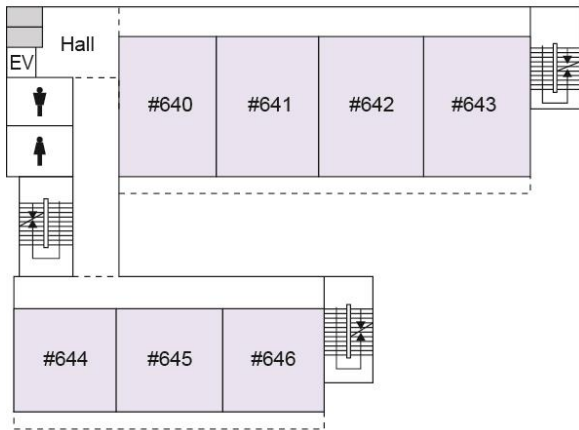
## Building 5



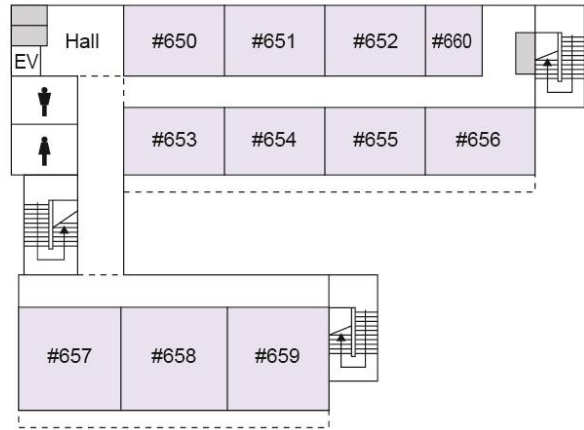
## Building 6



### Building 6

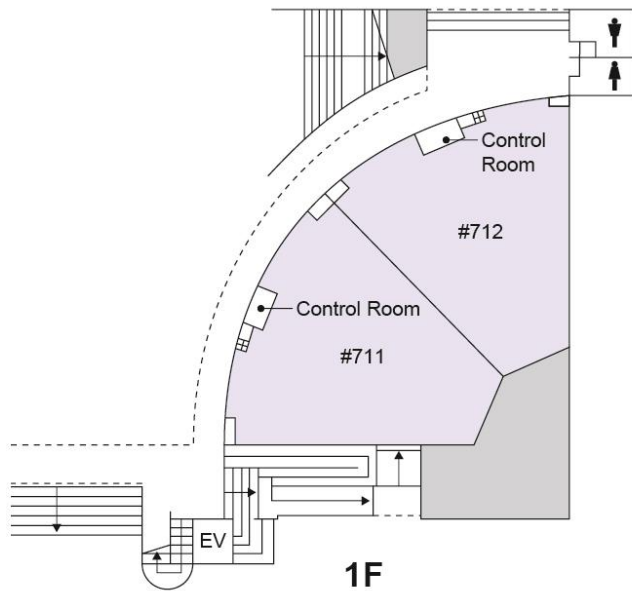


4F

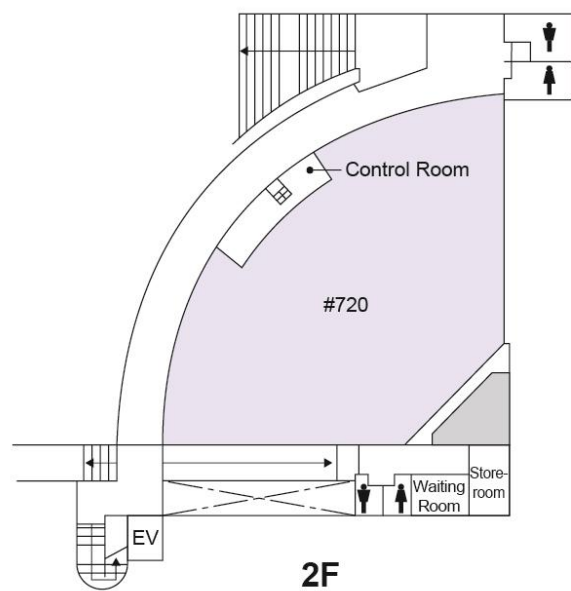


5F

### Building 7

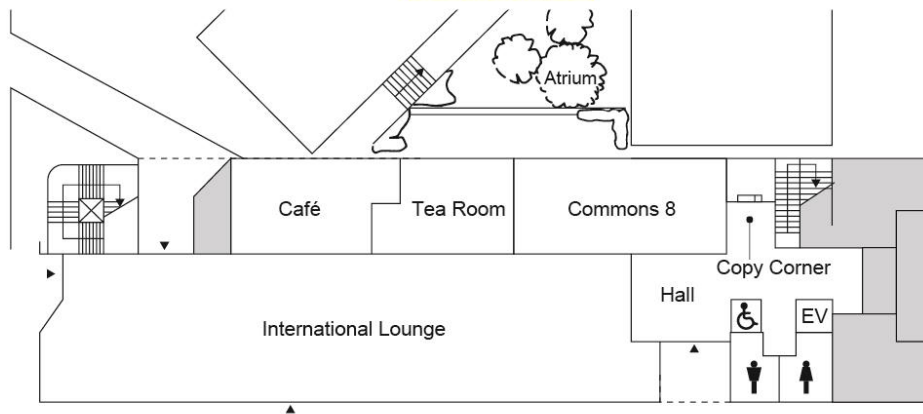


1F



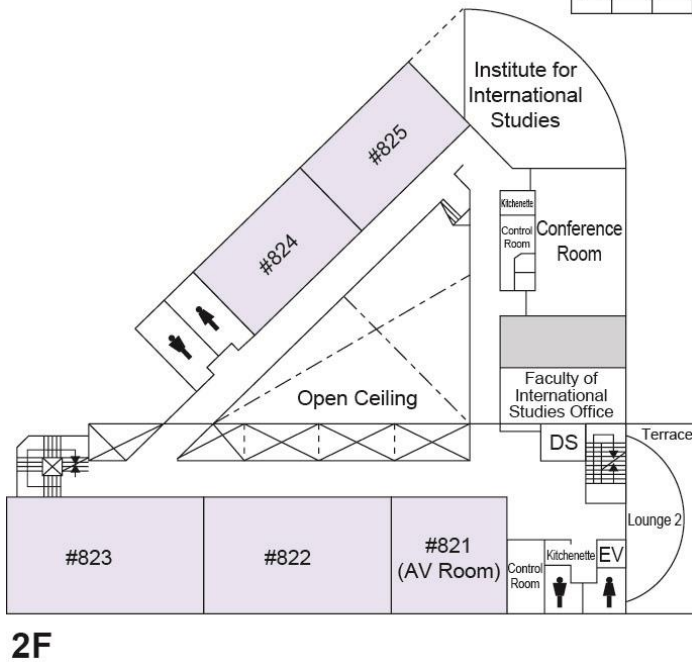
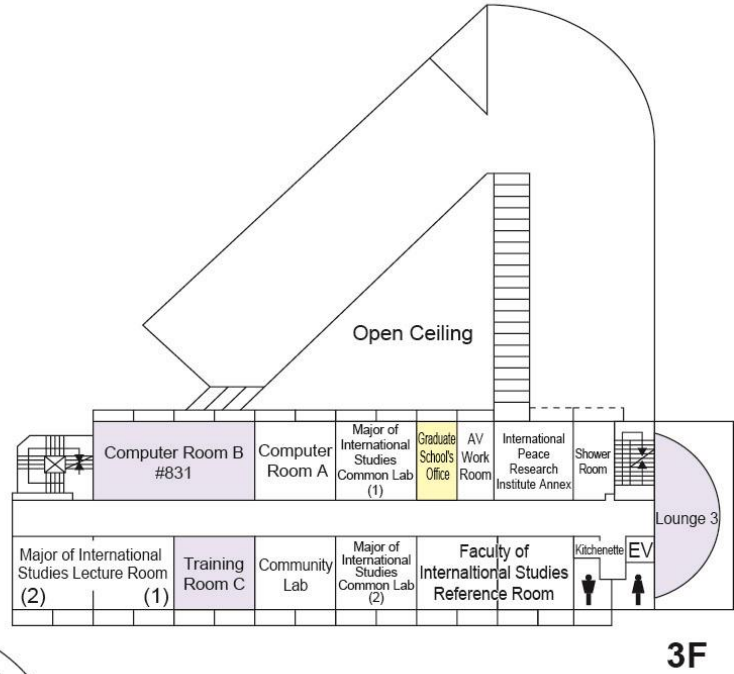
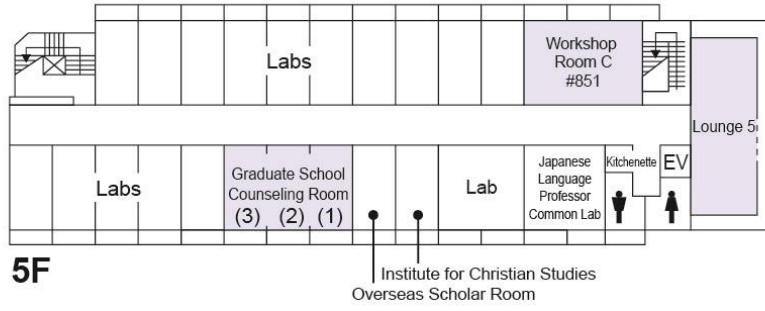
2F

### Building 8

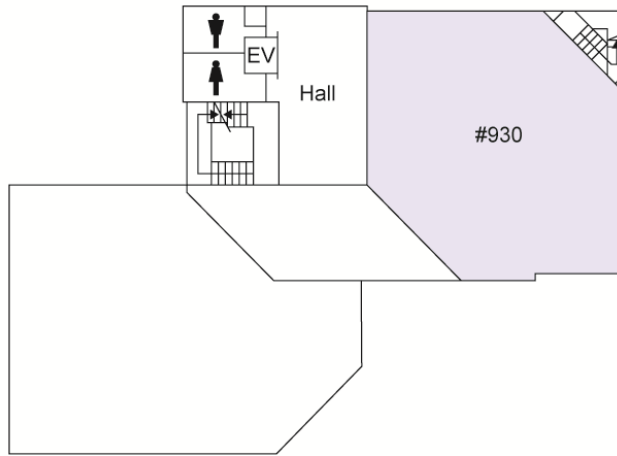


1F

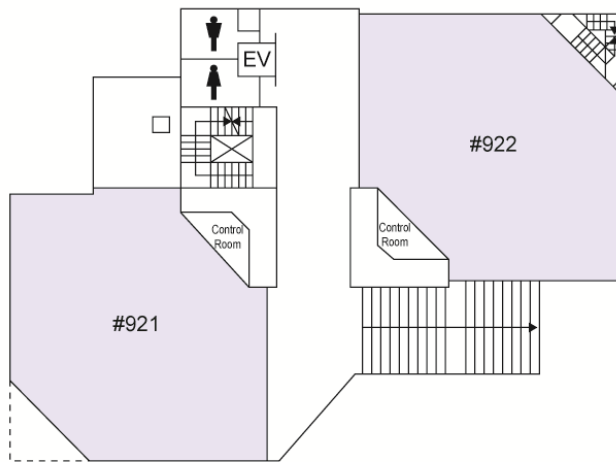
# Building 8



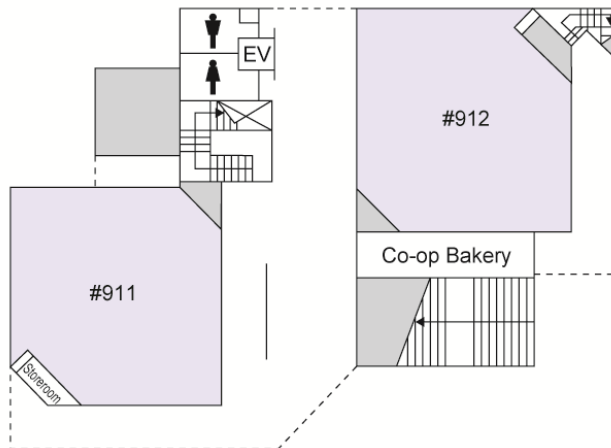
# Building 9



3F

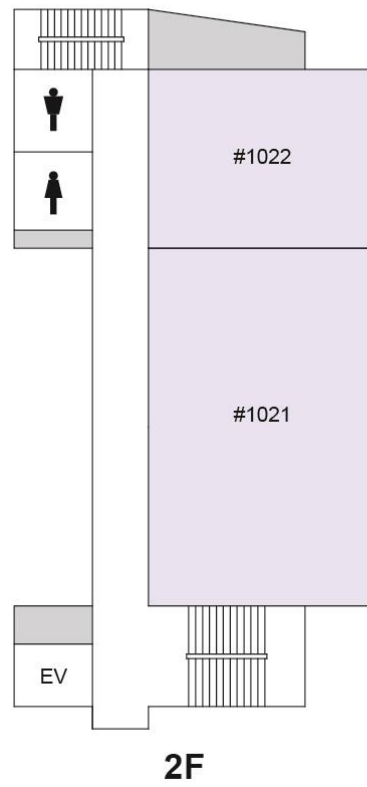
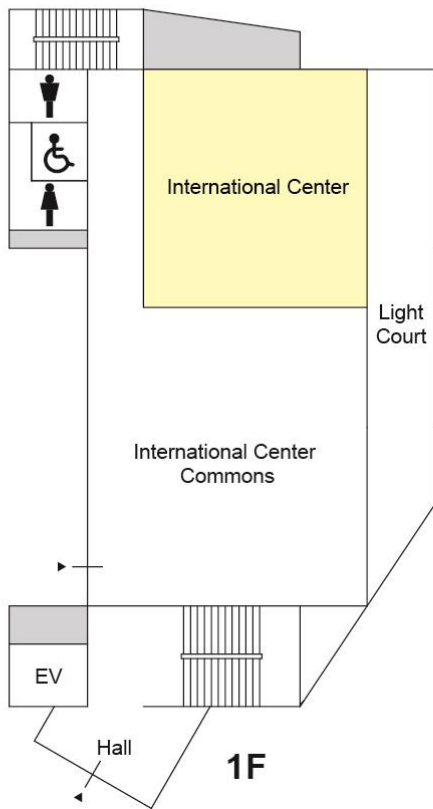
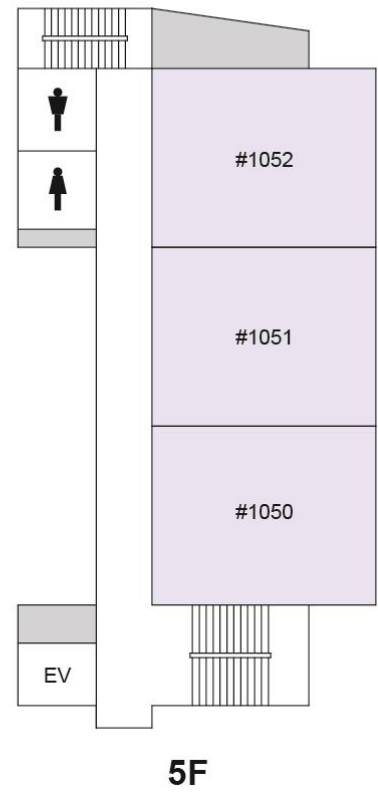
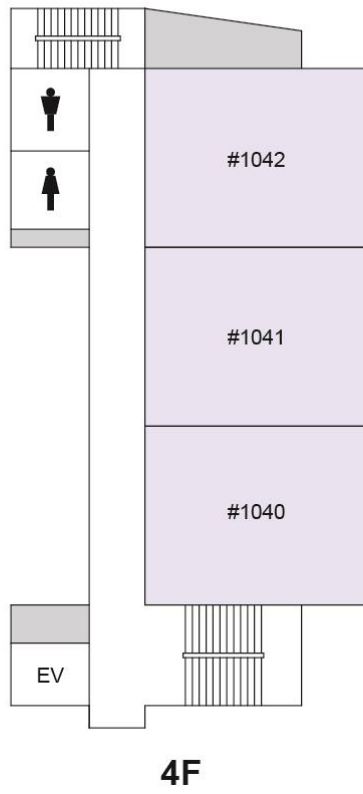
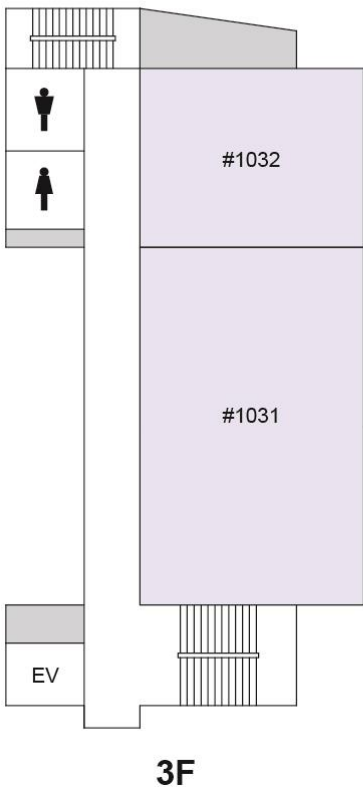


2F

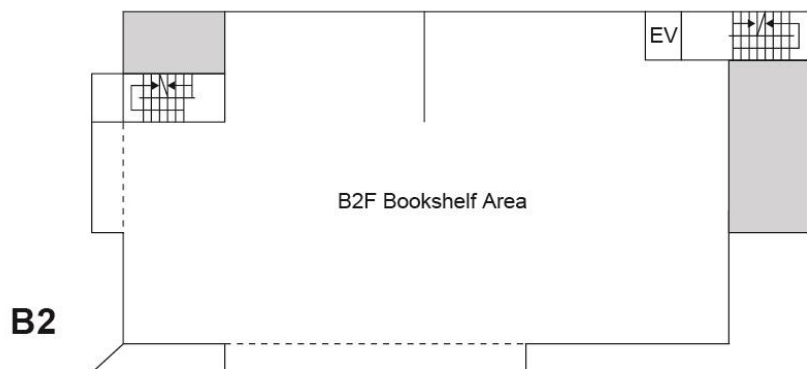
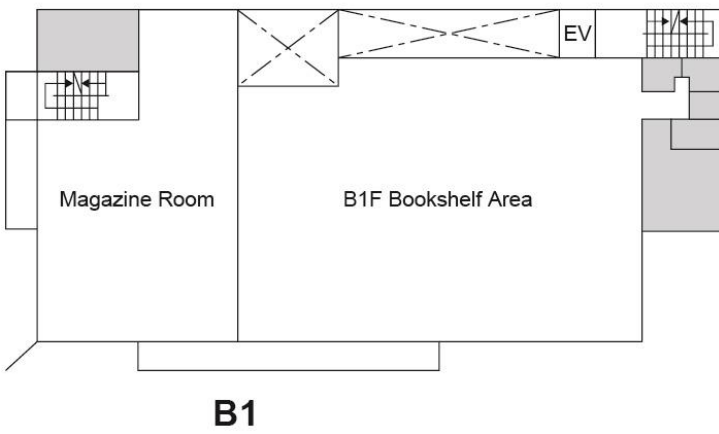
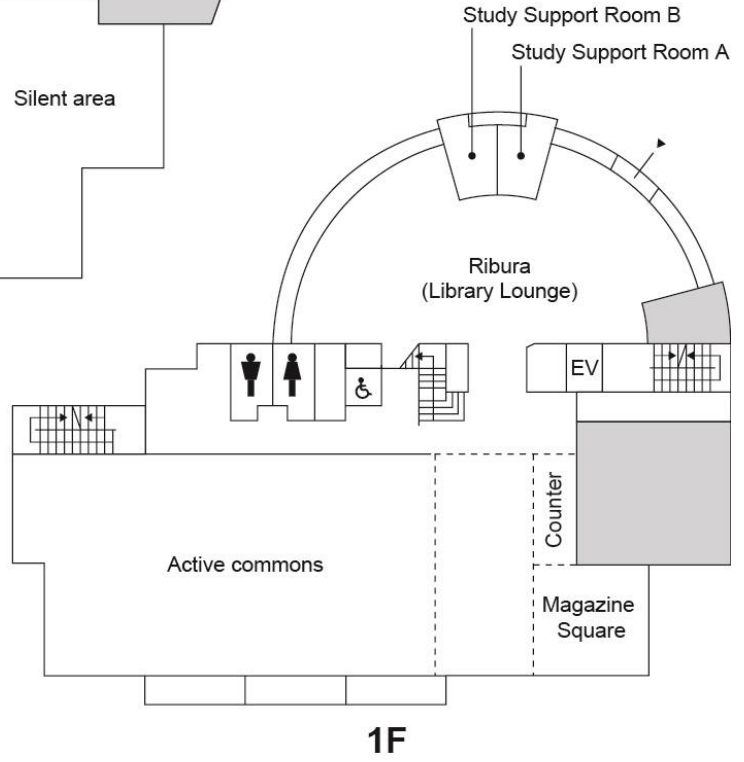
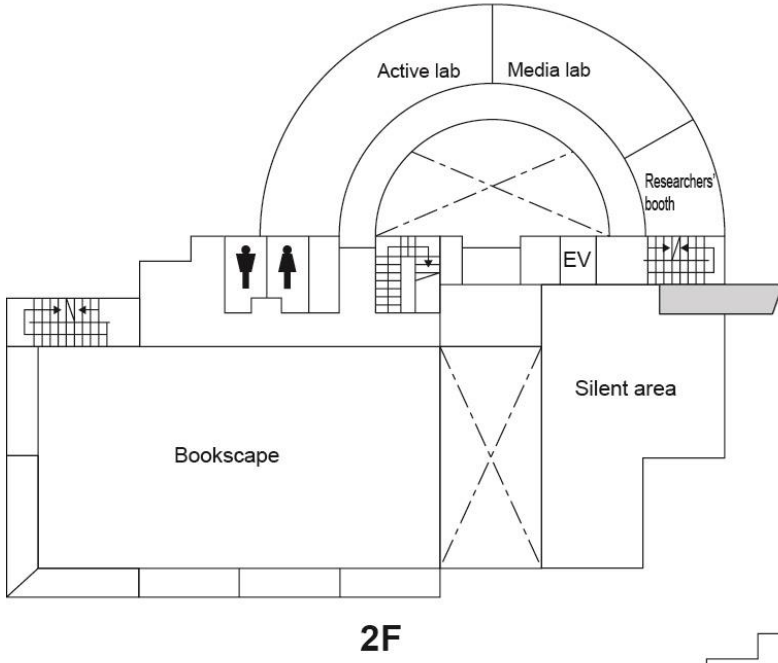


1F

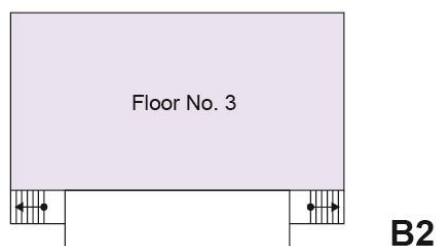
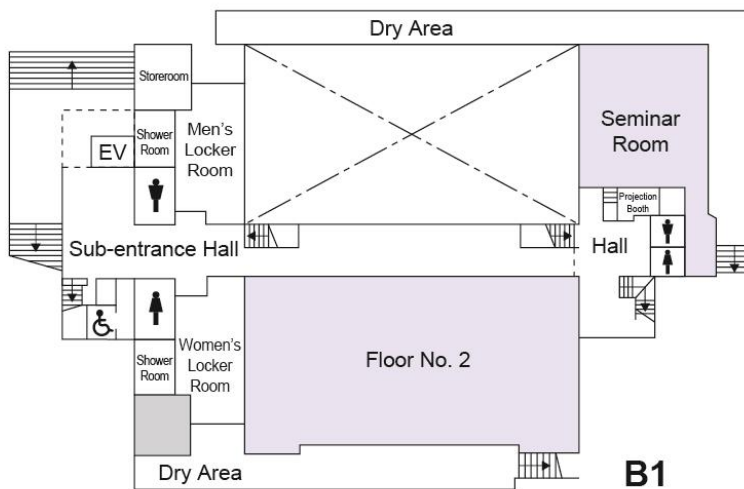
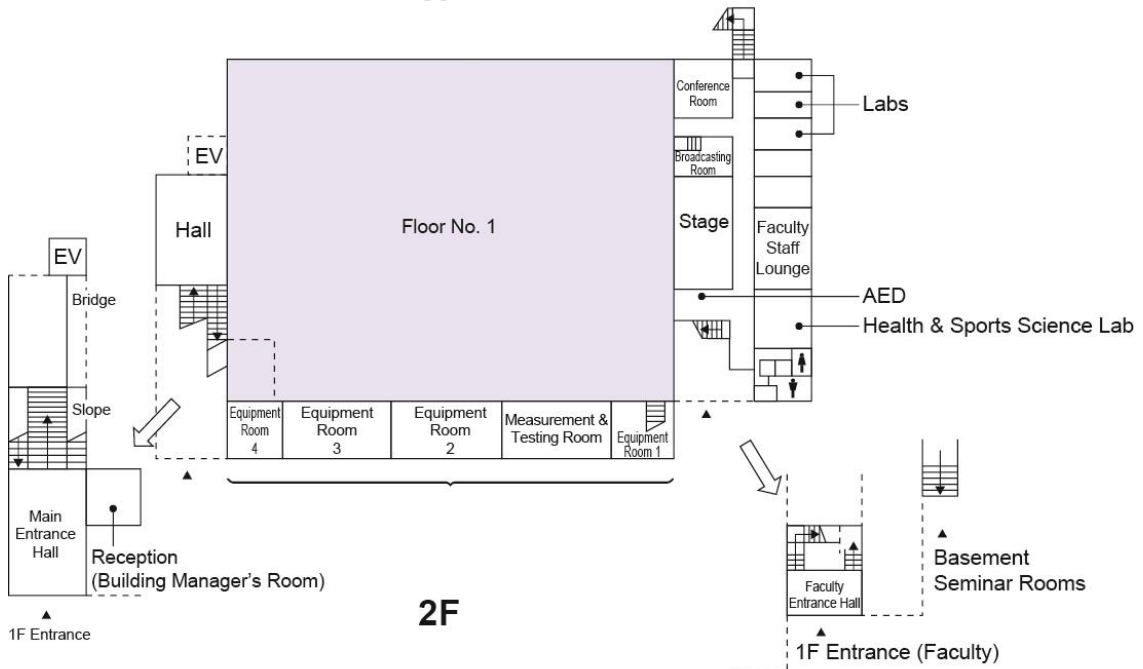
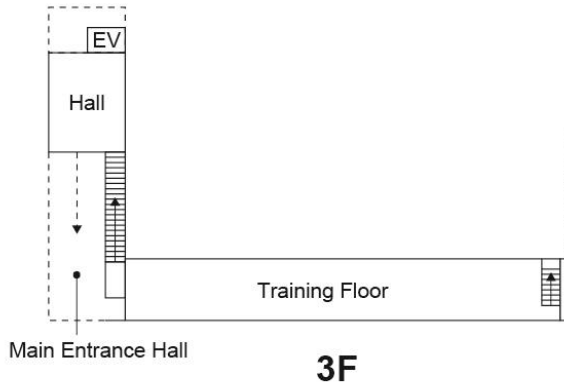
# Building 10



# Yokohama Campus Library



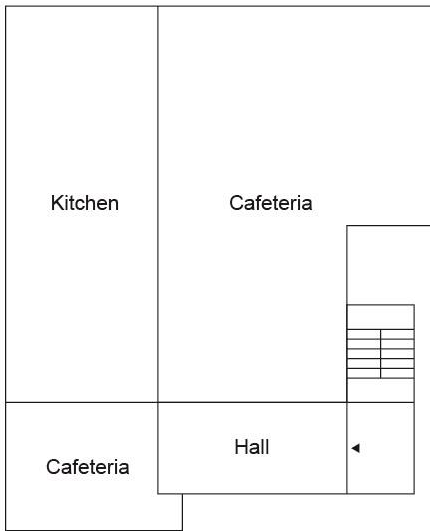
# Yokohama Campus Gymnasium



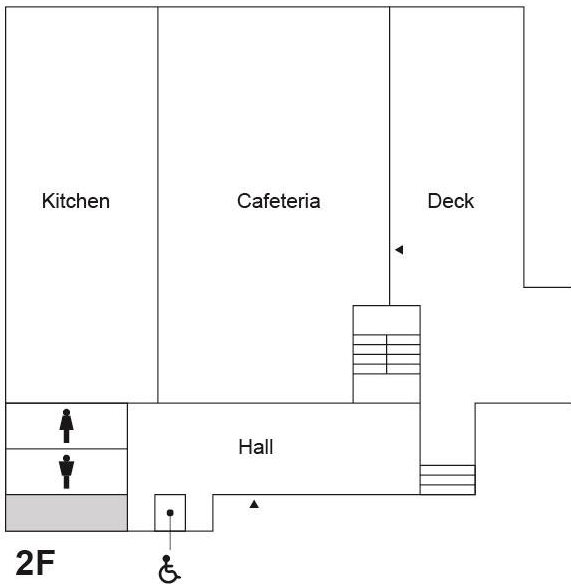


# Yokohama Campus Club Rooms

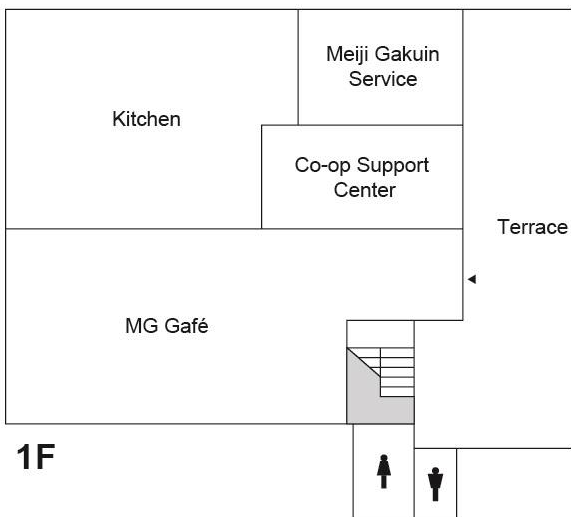
**Building C**



**3F**

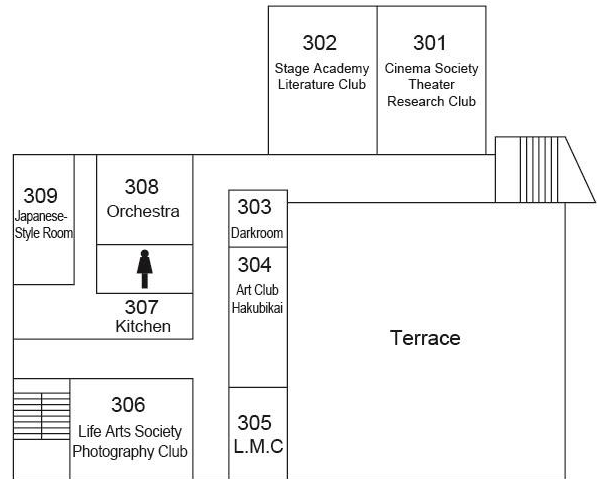


**2F**

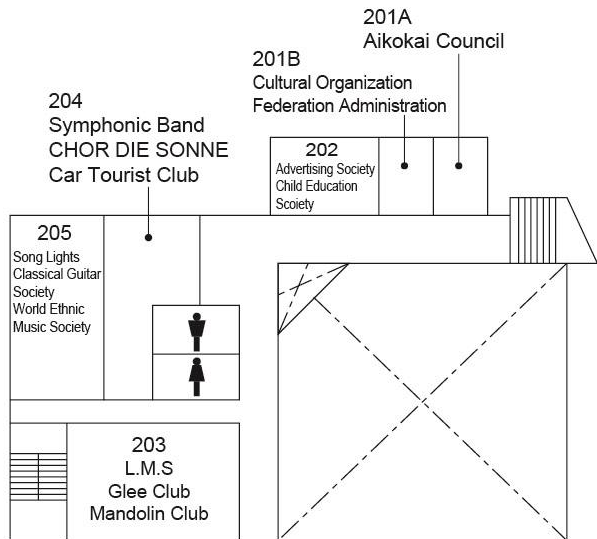


**1F**

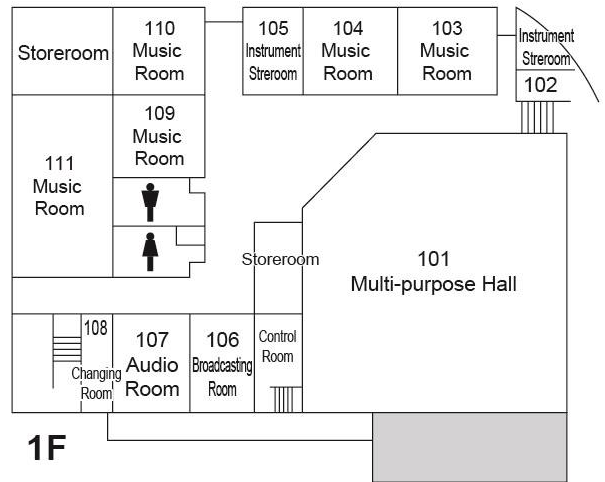
**Building E (Cultural Club Rooms)**



**3F**



**2F**



**1F**

## Building F (Sports Club Rooms)

		301 Ice Skating Ski	302 Shooting	303 Boxing Sailing	304 Nihon Kempo Table Tennis	305 Leader	
		306 Judo Karate	307 Kendo Baseball	308 Swimming Fencing	309 Badminton Lawn Tennis	310 Cheerleading	

**3F**

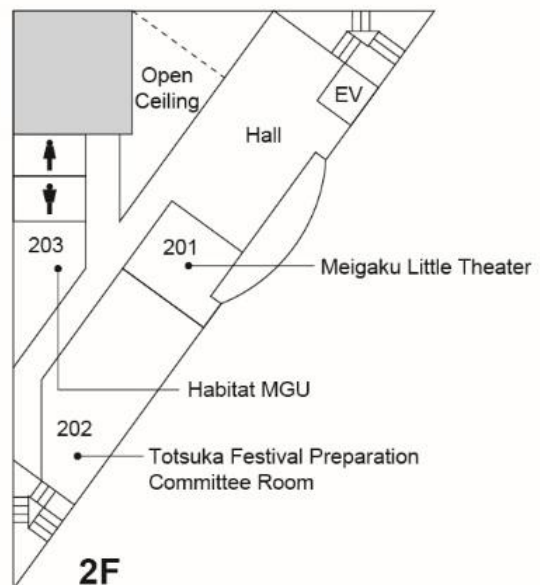
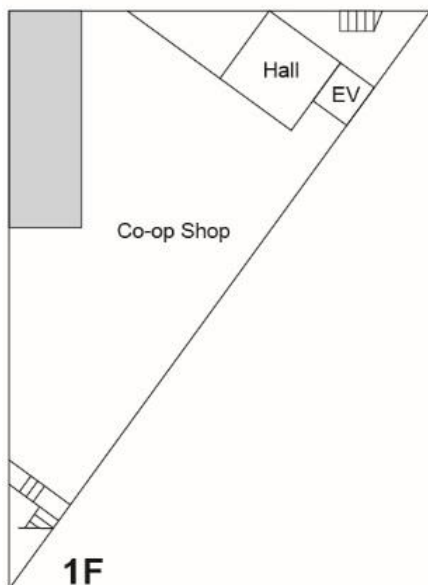
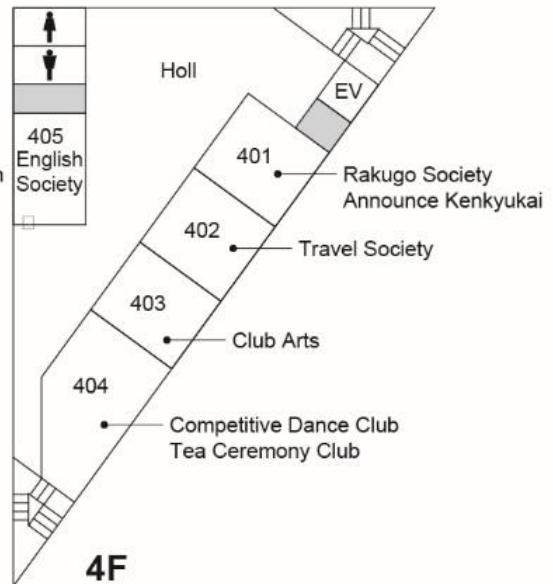
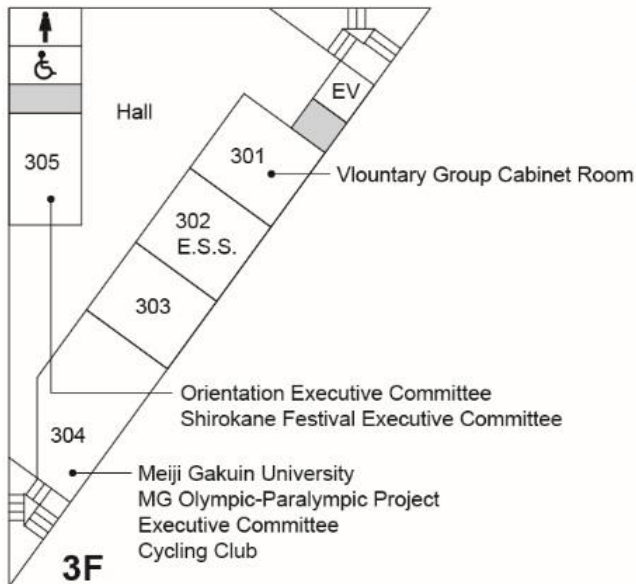
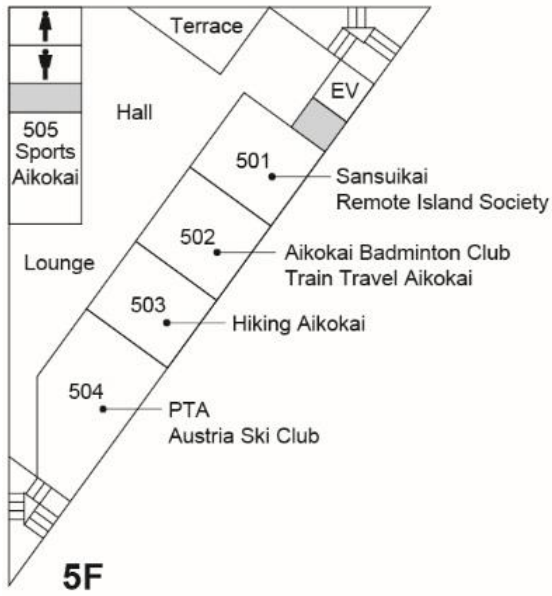
		201 Archery	202 Wander Vogel Golf	203 Basketball Handball	204 Kyudo	205 Shorinji Kempo	
		206 Aikido	207 Lacrosse (Men)	Terrace		208 Lacrosse (women)	209 Soft Tennis

**2F**

		101 Sports Association Administration	102 Track and Field Nanshiki Baseball	103 Rugby	104 Football Volleyball	105 American Football	
		106 Football (Soccer)	107 Rugby		108 American Football	109 Motorboat and Waterskiing	

**1F**

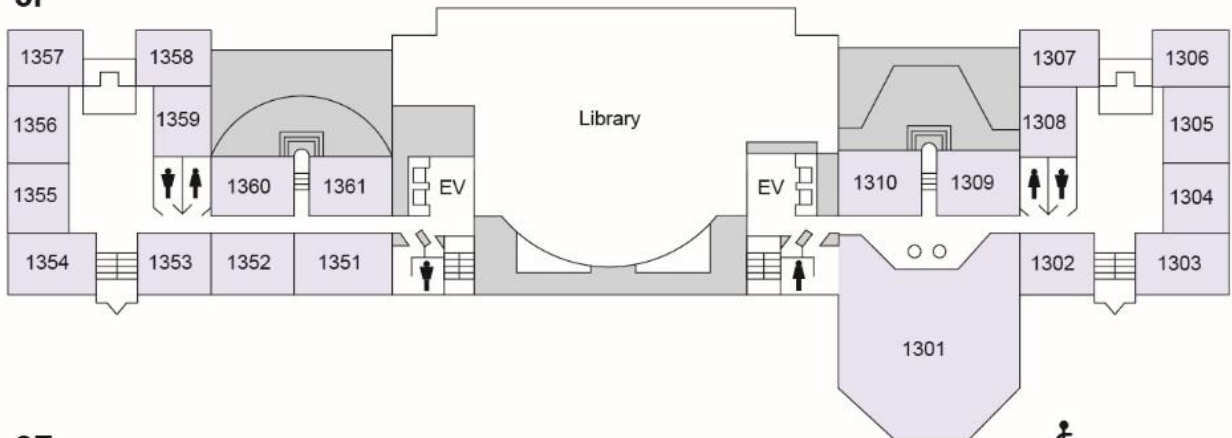
## Building G



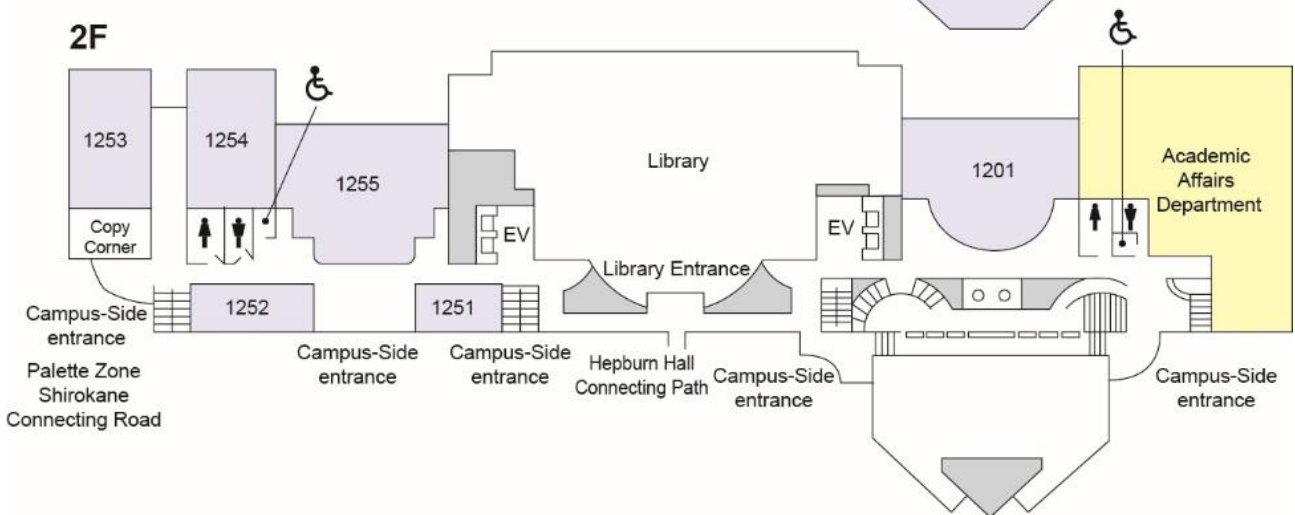
■ Shirokane Campus Building Layouts

**University Main Building**

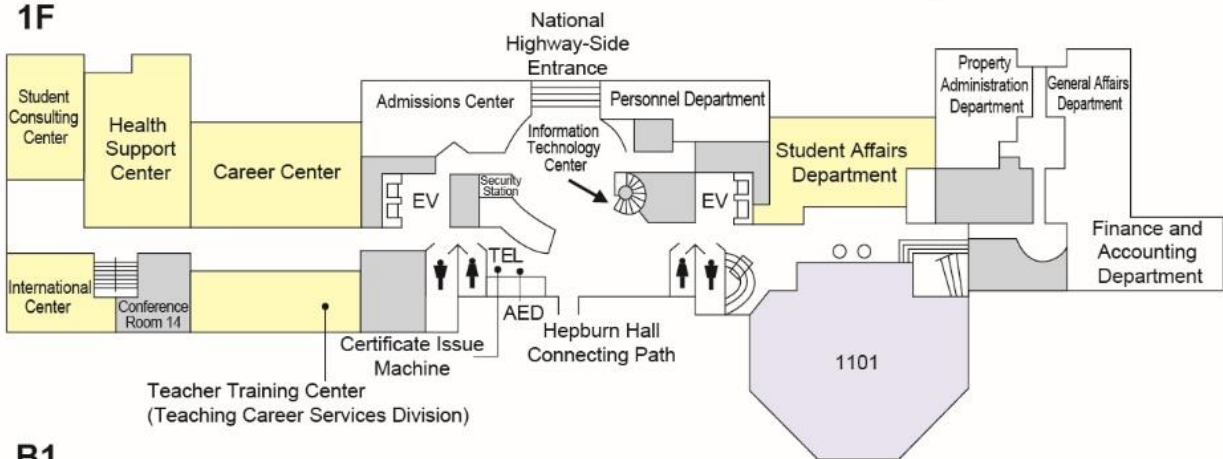
**3F**



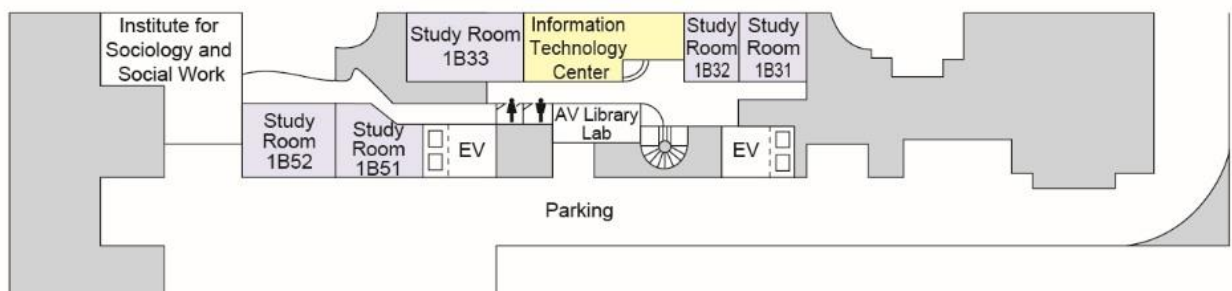
**2F**



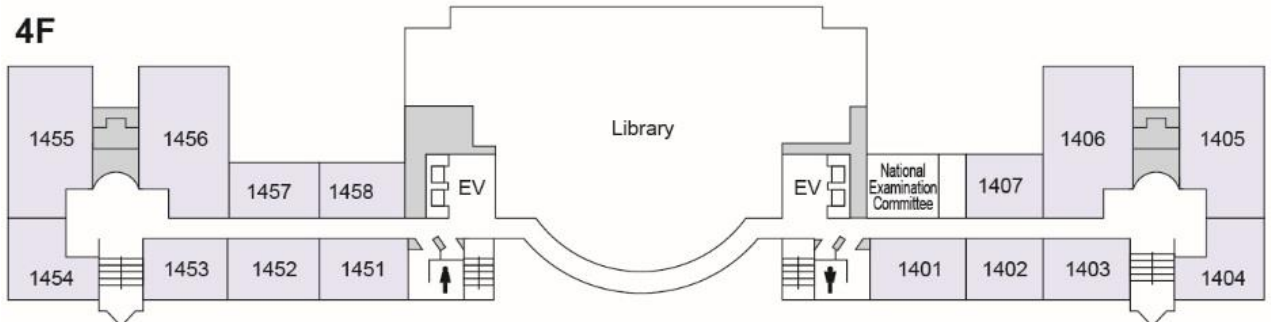
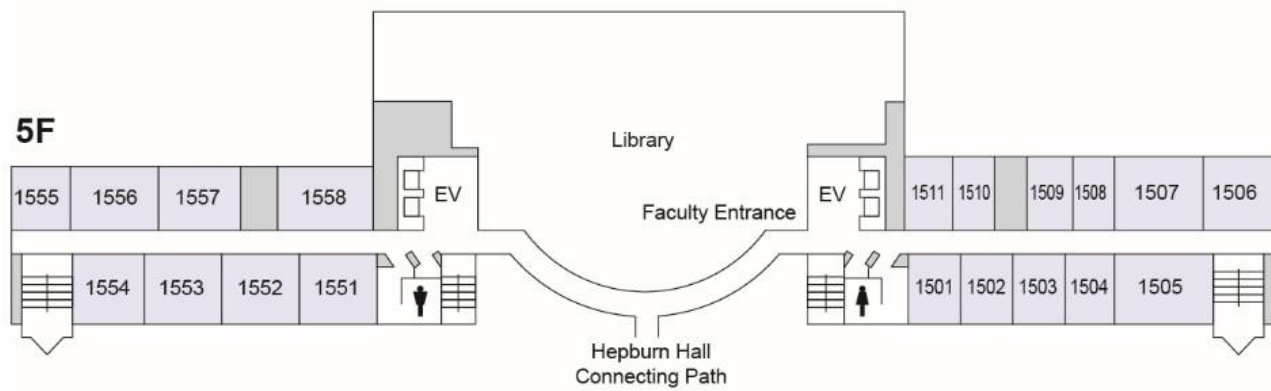
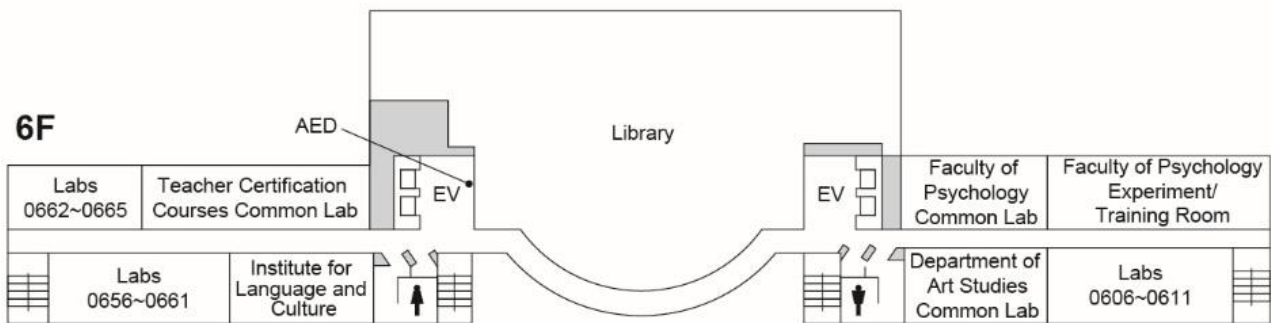
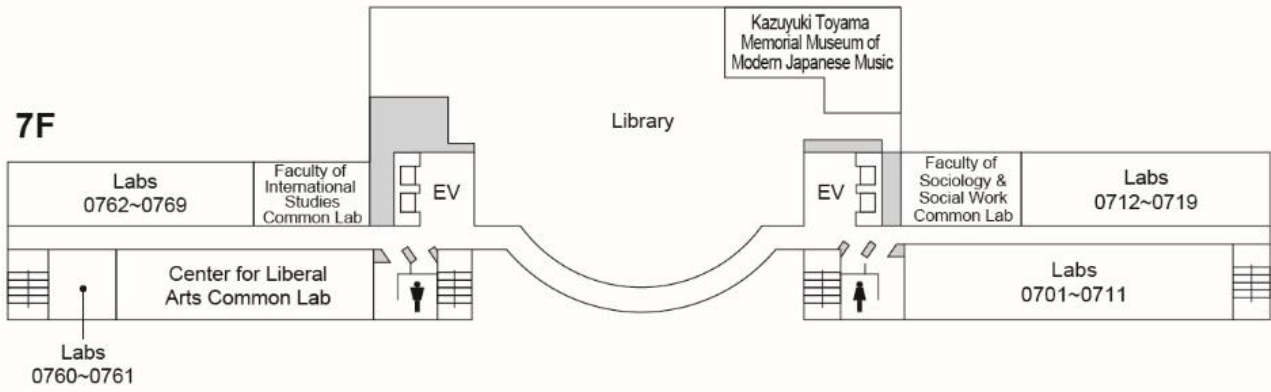
**1F**



**B1**

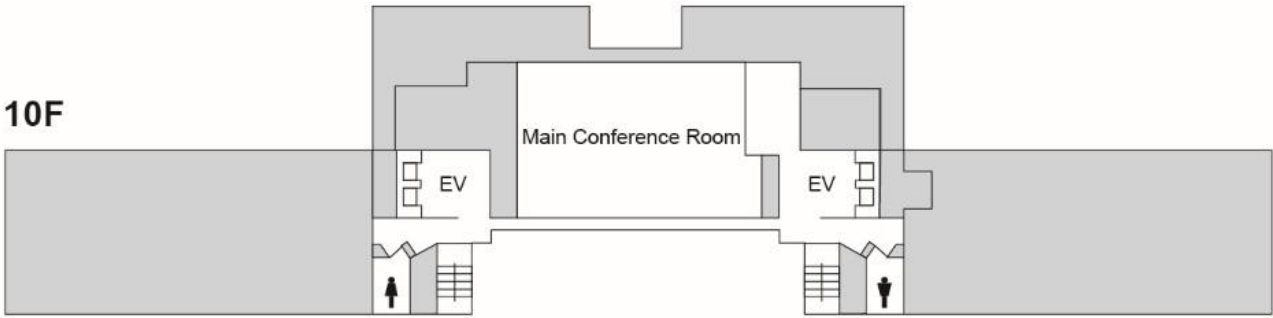


# University Main Building

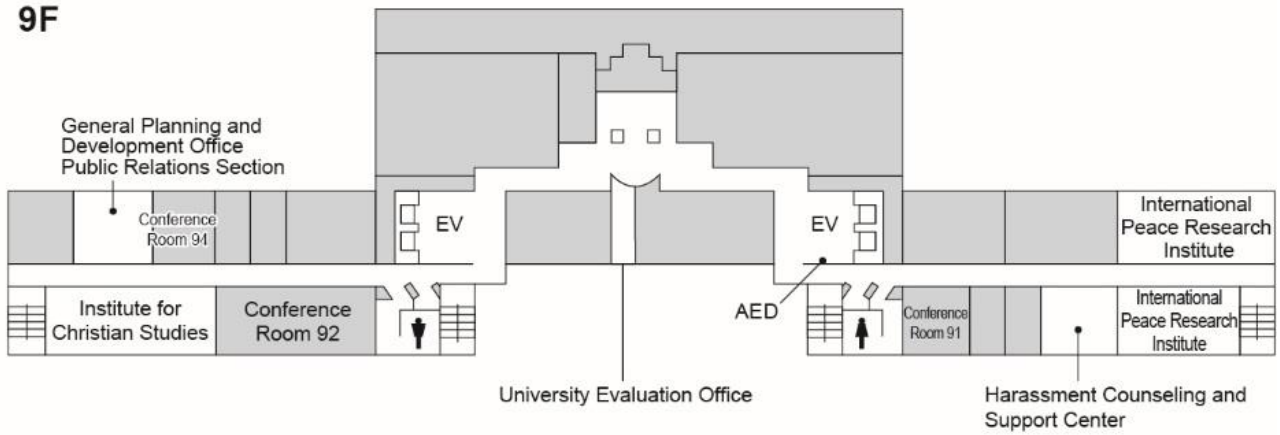


# University Main Building

10F



9F

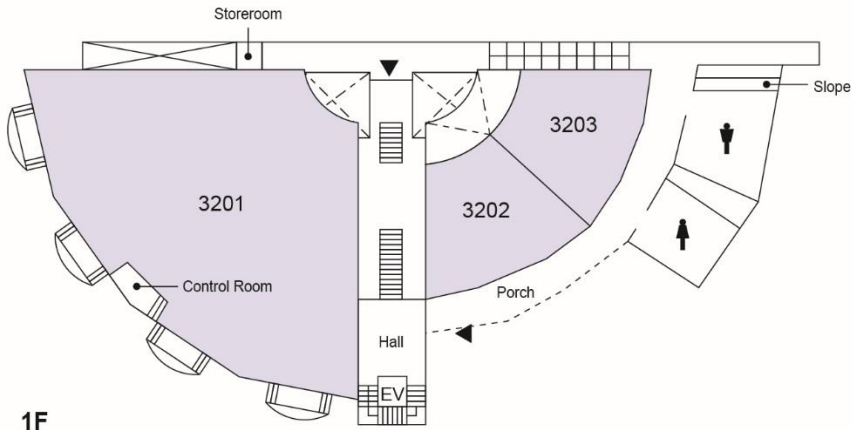


8F

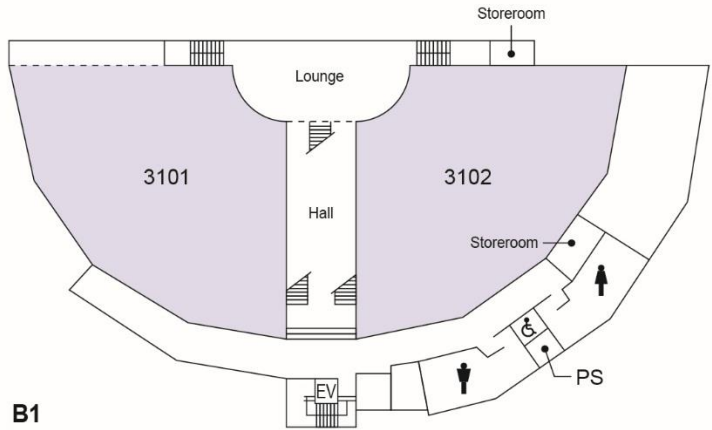




**University Building 3**

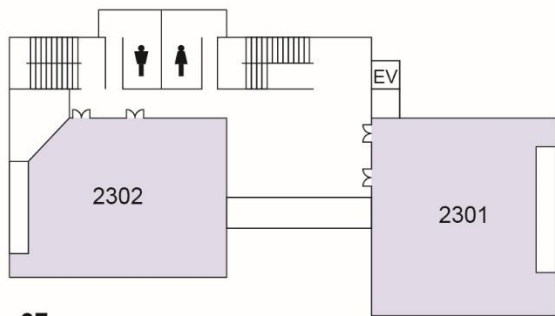


**1F**

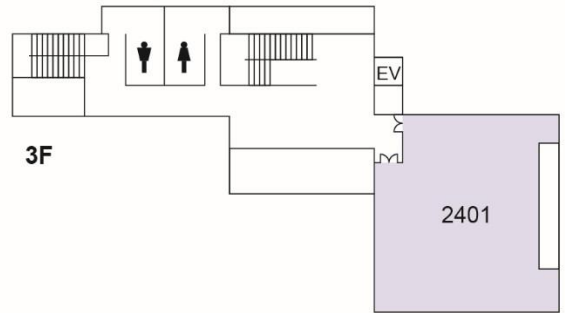


**B1**

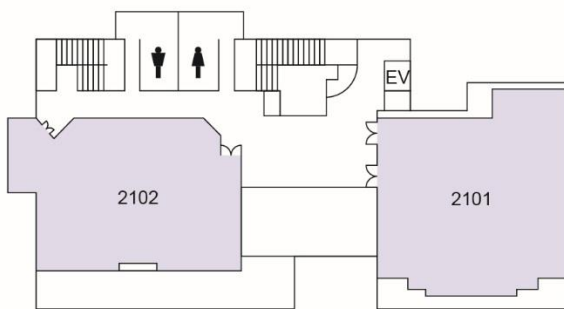
**University Building 2**



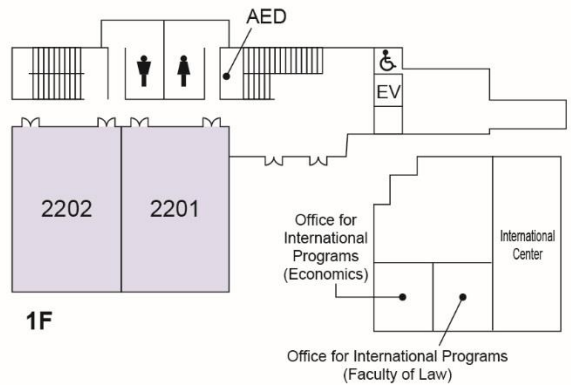
**2F**



**3F**



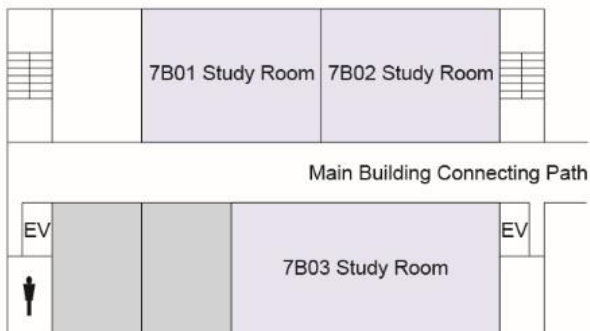
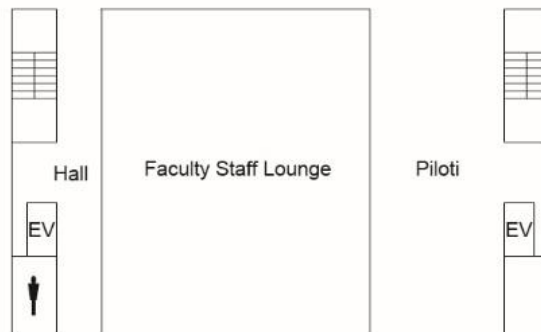
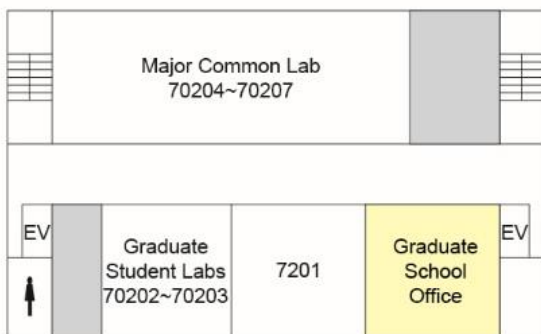
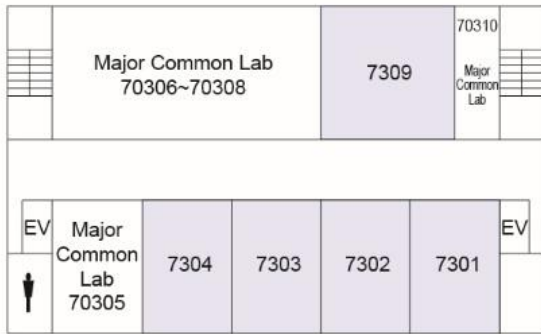
**B1**



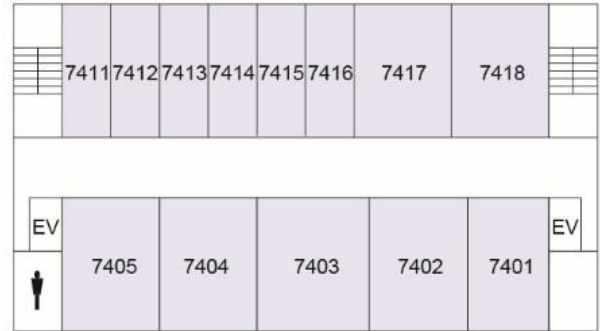
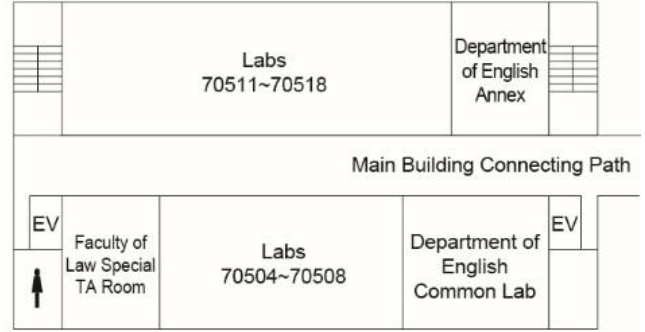
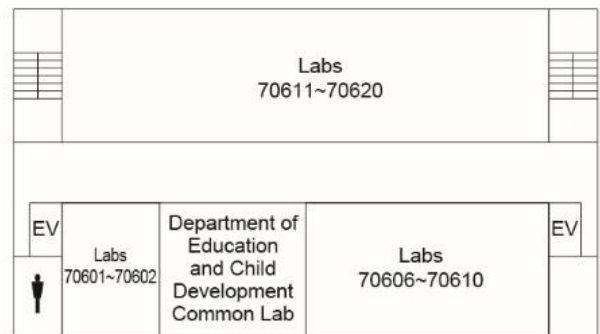
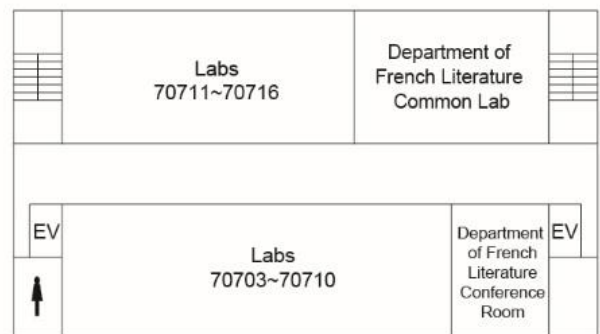
**1F**



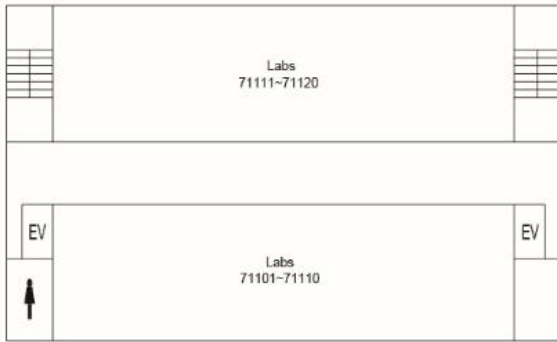
**University Building 7 (Hepburn Hall)**



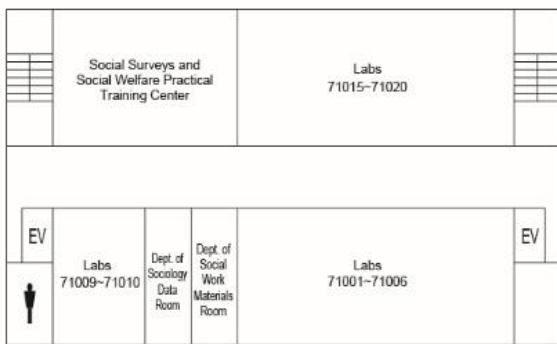
**University Building 7 (Hepburn Hall)**



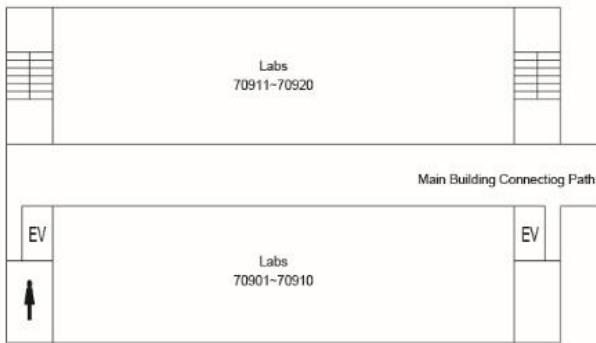
## University Building 7 (Hepburn Hall)



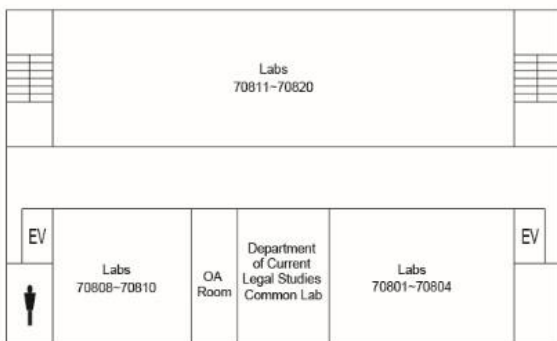
11F



10F

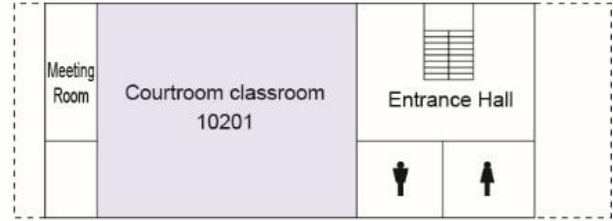


9F



8F

## University Building 10

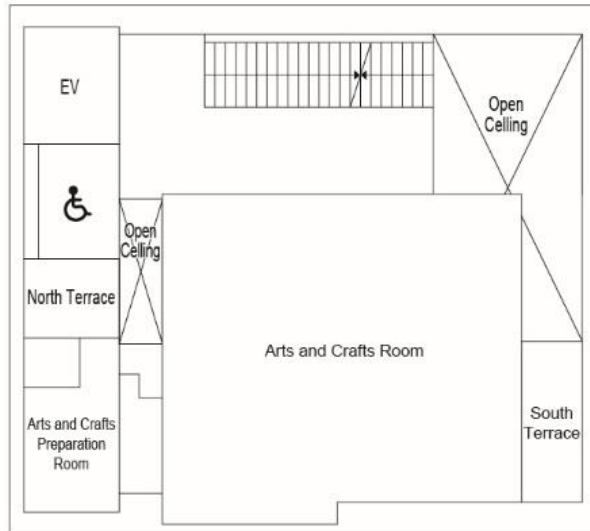


2F

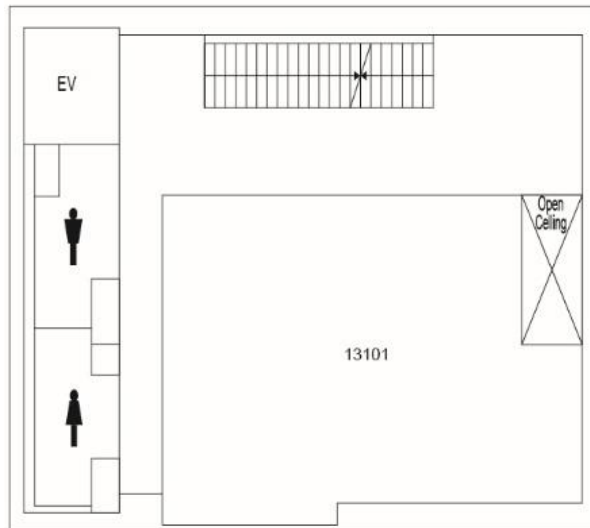


1F

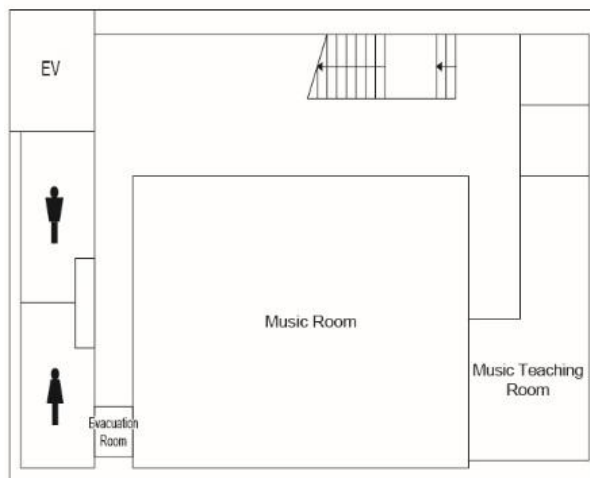
# University Building 13



**2F**

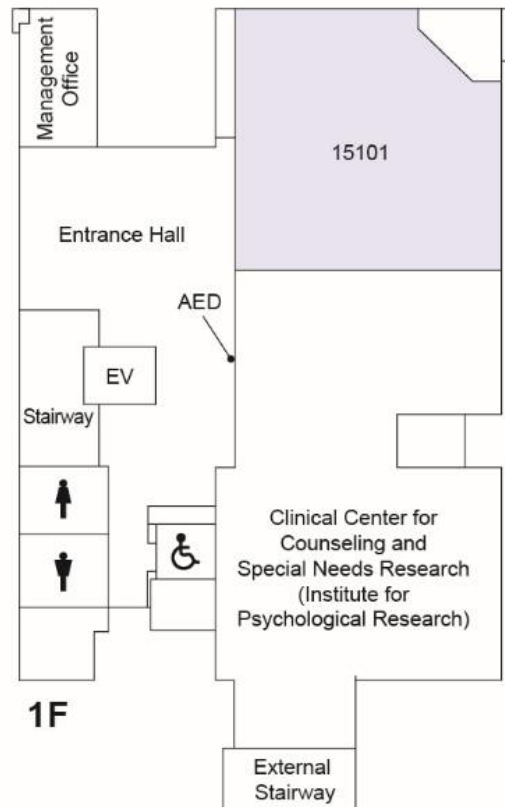
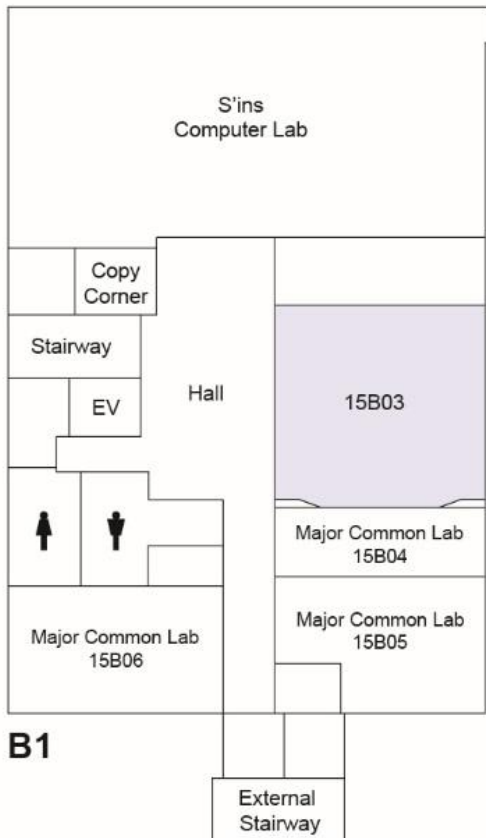
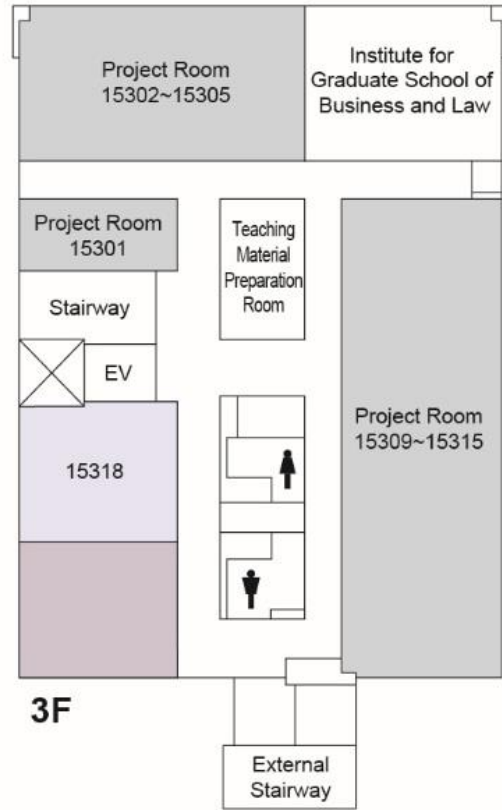
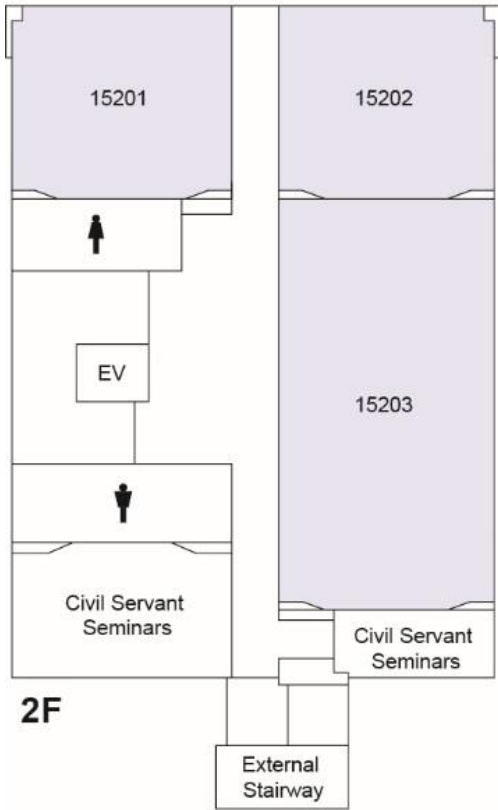


**1F**

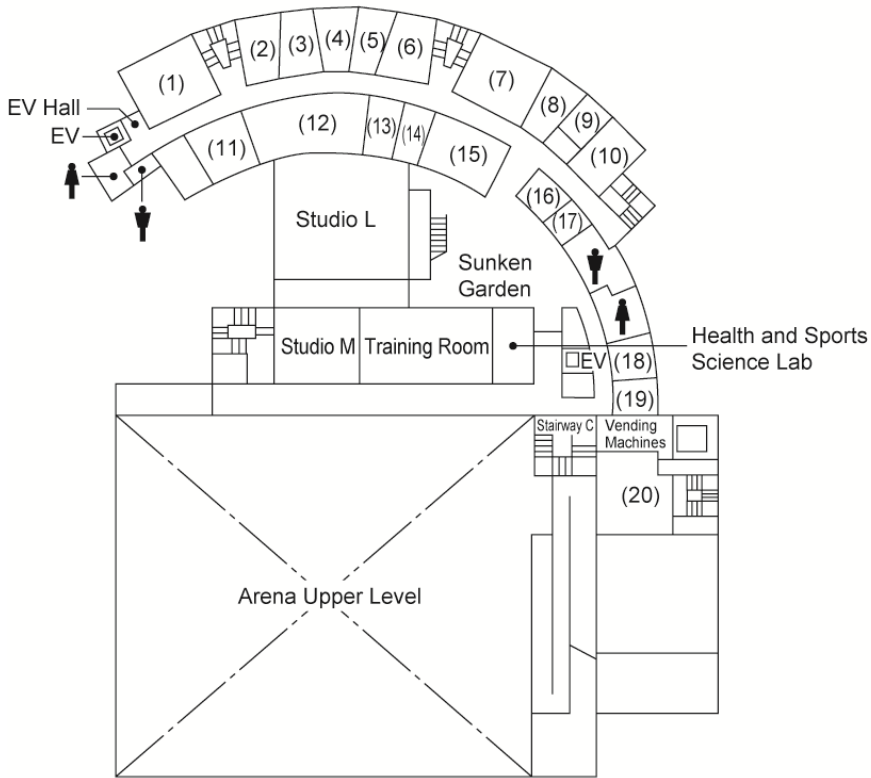


**B1**

# University Building 15

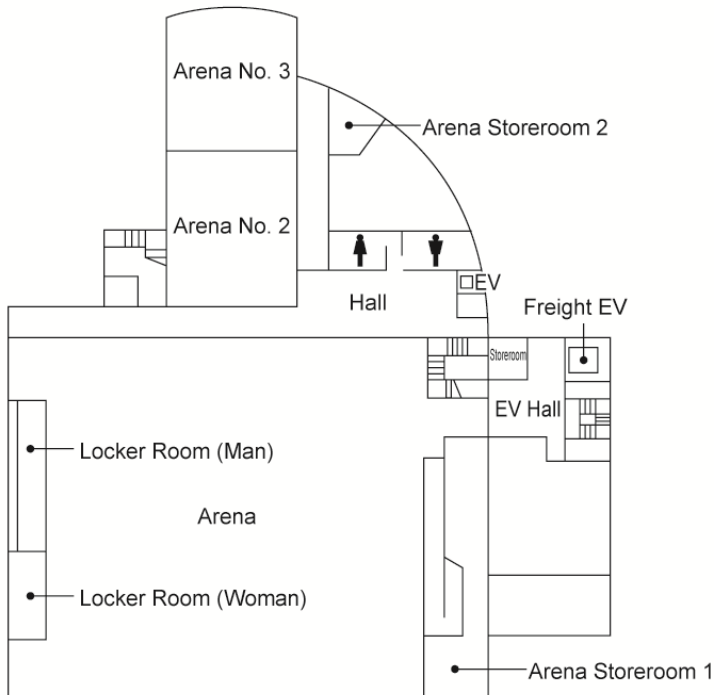


## Palette Zone Shirokane



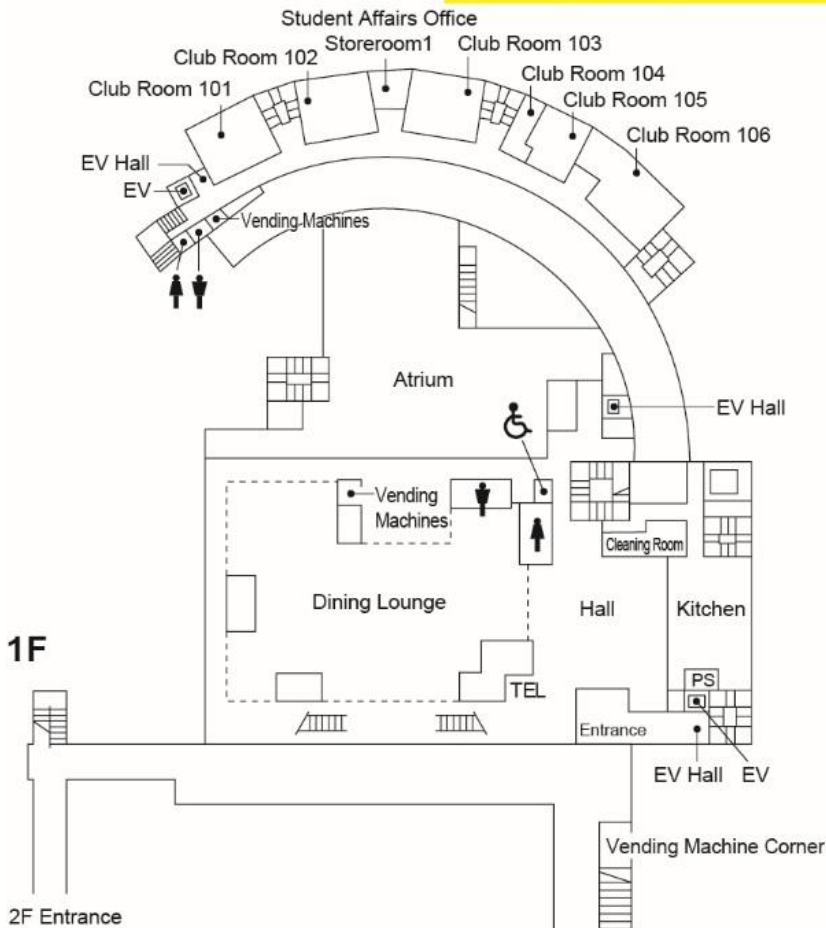
- (1) Trunk Room 1
- (2) S Studio 1
- (3) S Studio 2
- (4) Printing Room
- (5) S Studio 3
- (6) S Studio 4
- (7) Trunk Room 2
- (8) AV Studio Recording Room
- (9) AV Studio Control Room
- (10) AV Studio Mixing Room
- (11) Musical Instrument Storeroom 2
- (12) Musical Instrument Storeroom 1
- (13) Darkroom
- (14) Kitchen
- (15) Japanese-Style Room
- (16) Men's Shower Room
- (17) Men's Changing Room
- (18) Women's Changing Room
- (19) Women's Shower Room
- (20) Trunk Room 3

**B2**



**B3**

# Palette Zone Shirokane



<Club Room 101>  
Cycling Club, Hiking Aikokai, Car Tourist Club, Competitive Dance Club, Symphonic Band, Remote Island Society, Train Travel Aikokai, Habitat MGU

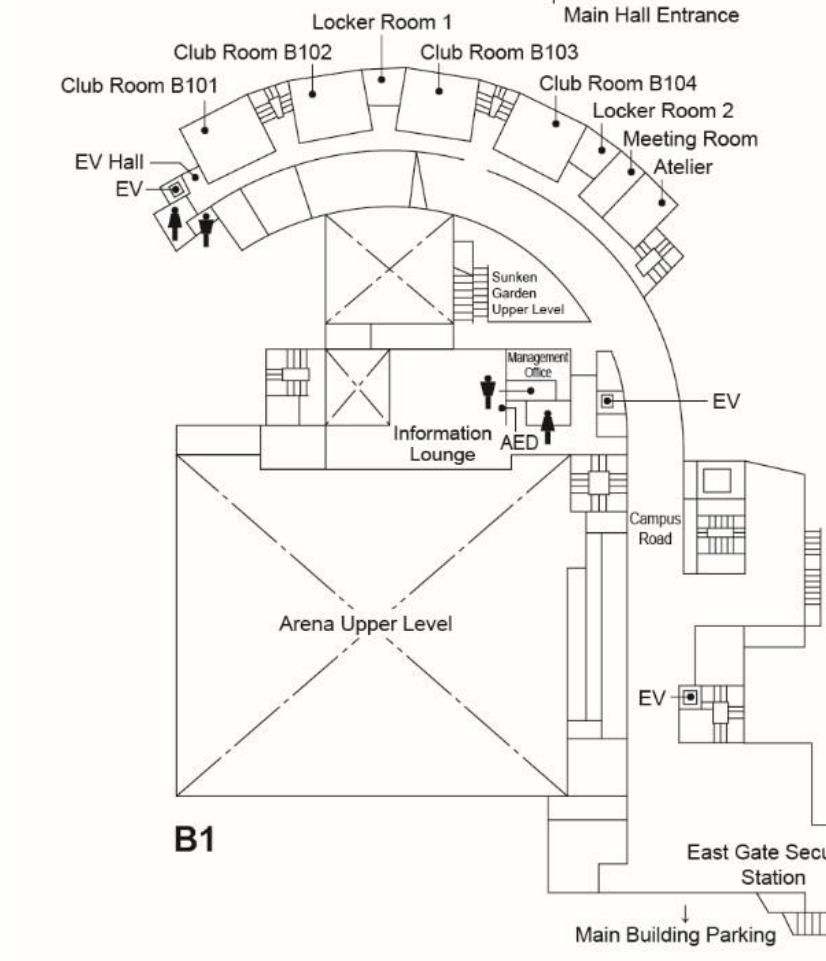
<Club Room 102>  
Playing Tennis Association, Sports Aikokai, Austria Ski Club, Classic Guitar Society, CHOR DIE SONNE, Song Lights, World Ethnic Music Society

<Club Room 103>  
English Society, Tea Ceremony Club, Club Arts, Motorboat and Waterskiing Club, Ski Team, Announce Kenkyukai, Rakugo Society, Puppet Troupe ZOO

<Club Room 104>  
Cheerleading Club, Leader Club, Brass Band Club

<Club Room 105>  
OPENROOM, Light Music Club (L.M.C), Meigaku Little Theater, Travel Society

<Club Room 106>  
Sansuikai, Scuba Diving Club, Shirokane Sports Association, Aikokai Soft Tennis Club, Aikokai Badminton Club



<Club Room B101>  
Track and field Club, Men's Lacrosse Club, Women's Lacrosse Club, Boxing Club, Fencing Club, Handball Club, Ice Hockey Club, Figure Skating Club, Football Club (Soccer)

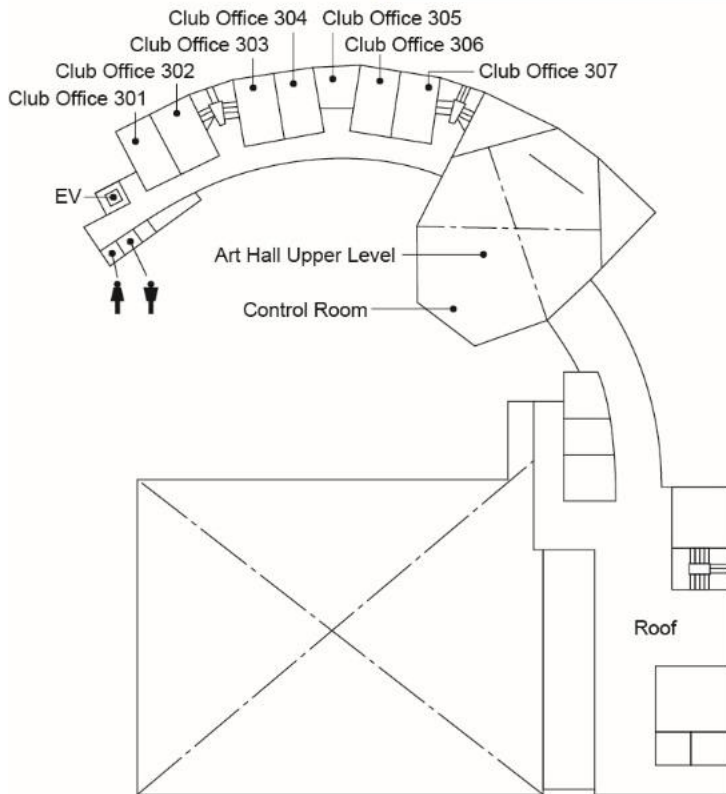
<Club Room B102>  
Soft Tennis Club, Sailing Club, Baseball Club, Nanshiki Baseball Club, Lawn Tennis Club, Rugby Club, Golf Club, American Football Club

<Club Room B103>  
Shooting Club, Swim Club, Table Tennis Club, Wander Vogel Club, Badminton Club, Basketball Club, Volleyball Club, Futsal Club

<Club Room B104>  
Aikido Club, Nikon Kempo Club, Kendo Club, Archery Club, Kyudo Club, Judo Club, Karate Club, Shorinji Kempo Club



## Palette Zone Shirokane



<Club Office 301>  
Sports Association Administration

<Club Office 302>  
Cultural Organization Federation  
Administration

<Club Office 303>  
Cheering Groups

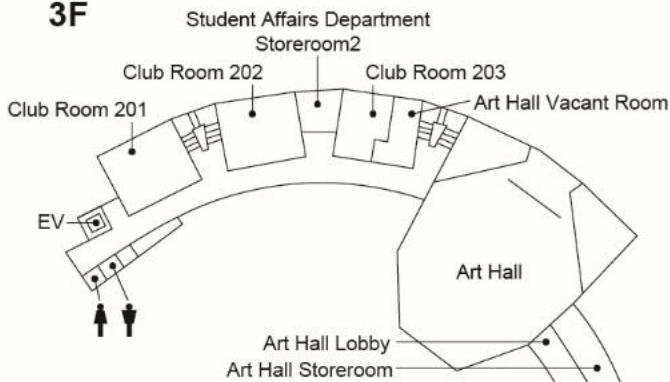
<Club Office 304>  
Aikokai Council

<Club Office 305>  
Orientation Executive Committee

<Club Office 306>  
Shirokane Festival Executive Committee

<Club Office 307>

**3F**



<Club Room 201>  
Stage Academy, Advertising Society,  
E.S.S., Life Arts Society, Mandolin Club,  
Orchestra, Glee Club

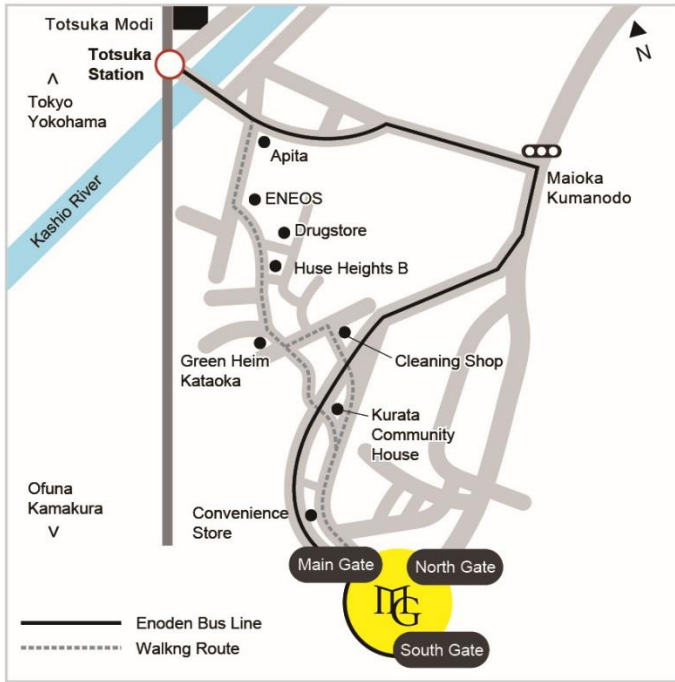
<Club Room 202>  
Literature Club, Art Club Hakubikai,  
Photography Club, Theater Research Club,  
Cinema Society, L.M.S.,  
Child Education Society, Acoustic Minds

<Club Room 203>

**2F**



## ■ Yokohama Campus



1518 Kamikurata-cho, Totsuka-ku, Yokohama, Kanagawa, 244-8539

- From Totsuka Station  
[JR Tokaido Line, Yokosuka Line and Shonan-Shinjuku Line; Yokohama Municipal Subway Blue Line]

From JR Totsuka Station (the gate on the bridge), exit the gate and proceed to your right and go down the stairs to the East Exit bus terminal.

From JR Totsuka Station (underground-level gate), exit the gate and proceed to your right using Exit 5 to get to the East Exit bus terminal.

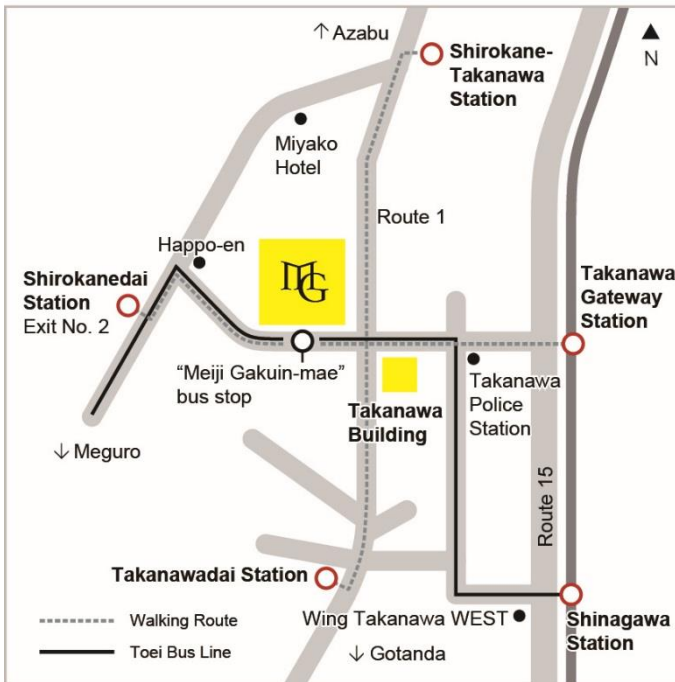
From Yokohama Municipal Subway Blue Line Totsuka Station, exit the gate and go up to B1F via the escalator. Depart from Exit 5 to the Bus Terminal at the East Exit.

At East Exit bus terminal platform 8, take the Enoden Bus bound for "Meiji Gakuin University South Gate" (about a 7-minute ride). Get off the bus at the "Meiji Gakuin University Main Gate" stop or the "Meiji Gakuin University South Gate" stop.

- From Hongodai Station  
[JR Negishi Line]

At the Earth Citizen Plaza bus stop take the Enoden Bus bound for "Totsuka Station" (about a 7-minute ride). Get off the bus at the "Meiji Gakuin University South Gate" stop or the "Meiji Gakuin University Main Gate" stop.

## ■ Shirokane Campus



1-2-37 Shirokanedai Minato-ku Tokyo, 108-8636

- From Shinagawa Station  
[JR Yamanote Line, Keihin Tohoku Line, kaido Line, Yokosuka Line and Tokaido Shinkansen; Keihin Kyuko Line]

From the Takanawa Exit, take the Toei Bus bound for "Meguro Station" and get off at the "Meiji Gakuin-mae" stop (about a 6-minute ride).

\* Walking takes about 17 minutes

- From Meguro Station  
[JR Yamanote Line, Tokyu Meguro Line, Tokyo Metro Namboku Line, Toei Subway Mita Line]

From the East Exit (side with traffic circle), take the Toei Bus bound for "Oi Horse Track" and get off at the "Meiji Gakuin -mae" stop (about a 6-minute ride).

\* Walking takes about 20 minutes

- From Shirokanedai Station  
[Tokyo Metro Namboku Line, Toei Subway Mita Line]  
Approximately 7 minutes' walk from Exit No. 2 (Shirokane-Takanawa side / there is an elevator)

- From Shirokane-Takanawa Station  
[Tokyo Metro Namboku Line, Toei Subway Mita Line]  
About a 7-minute walk from Exit 1 (Meguro Station side/with an elevator).

- From Takanawa Gateway Station  
[JR Yamanote Line, Keihin Tohoku Line]  
Approximately 13 minutes' walk

- From Takanawadai Station  
[Toei Subway Asakusa Line]  
Approximately 7 minutes' walk from Exit A2

## ■ Enoden Bus Schedule for Commuting to the Yokohama Campus

- \* The bus timetable is distributed to each Security Station.
- \* On national holidays during term time extra busses are added to the holiday schedule.
- \* Please understand in advance that buses may not be able to run on schedule during periods when traffic is heavy, etc.

### ■ If using Totsuka Station

As a general rule, buses run on the "Schedule A" during class and regular examination periods and on the "Schedule B" when classes are not in session.

Totsuka Station bus stop (East Exit bus terminal platform 8)

To Meiji Gakuin University South Gate and Hirashima			Totsuka Station bus stop Pole 8	
Destination	For weekdays		For Saturdays and national holidays	
	A	B	A	B
06	34 50	34 50	19 40 53	19 40 53
07	<sup>平</sup> 02 <sup>平</sup> 19 <sup>平</sup> 32 42	<sup>平</sup> 02 <sup>平</sup> 19 <sup>平</sup> 32 42	12 32 <sup>平</sup> 52	12 32 <sup>平</sup> 52
08	<sup>平</sup> 05 14 19 26 32 34 37 39 42 44 49 51 53 58	<sup>平</sup> 05 14 19 26 32 37 39 42 44 51 58	12 26 42 <sup>平</sup> 57	12 26 42 <sup>平</sup> 57
09	<sup>平</sup> 02 06 14 18 24 29 32 36 41 48 52 57	<sup>平</sup> 02 12 24 32 36 46 57	03 18 32 42 <sup>平</sup> 57	03 18 32 42 <sup>平</sup> 57
10	<sup>平</sup> 04 06 12 17 22 27 29 32 34 36 39 42 44 47 50 53 57	<sup>平</sup> 04 06 12 22 32 39 42 47 53	03 16 32 42 <sup>平</sup> 57	03 16 32 42 <sup>平</sup> 57
11	<sup>平</sup> 02 05 12 22 32 44 52	<sup>平</sup> 02 05 12 22 32 44 52	10 25 40 55	10 25 40 55
12	<sup>平</sup> 02 12 22 28 32 36 44 52	<sup>平</sup> 02 12 22 32 44 52	10 25 41 55	10 25 41 55
13	<sup>平</sup> 02 05 09 13 22 32 44 55	<sup>平</sup> 02 13 22 32 44 55	10 25 40 55	10 25 40 55
14	<sup>平</sup> 02 12 22 32 44 52	<sup>平</sup> 02 12 22 32 44 52	10 25 40 55	10 25 40 55
15	<sup>平</sup> 02 13 23 35 49 58	<sup>平</sup> 02 13 23 35 49 58	10 25 40 55	10 25 40 55
16	<sup>平</sup> 11 24 34 49 59	<sup>平</sup> 11 24 34 49 59	10 27 40 55	10 27 40 55
17	<sup>平</sup> 10 15 30 40 56	<sup>平</sup> 10 15 30 40 56	10 25 40 55	10 25 40 55
18	<sup>平</sup> 10 20 30 40 55	<sup>平</sup> 10 20 30 40 55	10 22 40 <sup>平</sup> 57	10 22 40 <sup>平</sup> 57
19	<sup>平</sup> 13 20 30 43 54	<sup>平</sup> 13 20 30 43 54	10 24 40 55	10 24 40 55
20	<sup>平</sup> 11 20 32 40	<sup>平</sup> 11 20 32 40	10 25 42 55	10 25 42 55
21	<sup>平</sup> 00 21 40	<sup>平</sup> 00 21 40	13 33 53	13 33 53
22	<sup>平</sup> 00 <sup>平</sup> 16 <sup>平</sup> 31 52	<sup>平</sup> 00 <sup>平</sup> 16 <sup>平</sup> 31 52	<sup>平</sup> 20	<sup>平</sup> 20

No symbol → Bound for Meiji Gakuin University South Gate

"平" symbol → Bound for Hirashima

Revised December 16, 2019

Meiji Gakuin University South Gate bus stop

To Totsuka Station			Meiji Gakuin University South Gate bus stop Pole 1	
Destination	For weekdays		For Saturdays and national holidays	
	A	B	A	B
06	00 20 35 46 55	00 20 35 46 55	28 37 51	28 37 51
07	06 16 25 36 40 43 49 56	06 16 25 36 40 43 49 56	00 12 24 36 48	00 12 24 36 48
08	02 10 18 26 34 42 48 56	02 10 18 26 34 42 48 56	00 12 24 36 48	00 12 24 36 48
09	02 10 18 26 35 42 51 56	02 10 18 26 35 42 51 56	01 15 31 46	01 15 31 46
10	04 15 23 31 38 51	04 15 23 31 38 51	01 16 31 46	01 16 31 46
11	06 14 23 34 46 54	06 14 23 34 46 54	01 16 31 46	01 18 31 46
12	00 11 22 26 36 46 52 55	00 11 22 26 36 46 52 55	01 16 31 46	01 16 31 46
13	06 14 24 33 46 57	06 14 24 33 46 57	01 16 31 46	01 16 31 46
14	15 22 26 34 37 38 43 49 55 59	15 22 26 37 55 59	01 14 31 46	01 14 31 46
15	<sup>急</sup> 03 06 08 12 15 19 24 25 32 35 37 45 47 53 57	06 25 35 45 53	01 16 31 46	01 16 31 46
16	<sup>急</sup> 07 09 18 26 28 36 38 42 47 50 54 56 58	09 26 36 56	01 16 31 46	01 16 31 46
17	<sup>急</sup> 02 05 07 15 19 30 36 40 46 48	05 19 36 46	01 16 31 46	01 16 31 46
18	<sup>急</sup> 00 02 10 16 20 24 26 28 31 35 36 39 49 50 57	02 16 26 36 50	01 15 31 46	01 15 31 46
19	<sup>急</sup> 00 06 08 15 23 40 46 52	00 06 15 23 40 46 52	01 16 26 44	01 16 26 44
20	00 14 25 40 51 59	00 14 25 40 51 59	02 30 46	02 30 46
21	19 38	19 38	06 31 51	06 31 51
22	00	00	11	11

"急" symbol → express

Revised December 16, 2019

■ If using Hongodai Station



**Earth Citizen Plaza bus stop**

(the nearest bus stop to Hongodai Station)

To Totsuka Station			Earth Citizen Plaza bus stop Pole 2	
For weekdays			For Saturdays and national holidays	
05	51			
06	11	37 57	19	42
07	16	47	39	
08	17	47	39	
09	17	47	37	
10	14	57	37	
11	37		37	
12	17	57	37	
13	37		37	
14	17	57	37	
15	36		37	
16	17	56	37	
17	37		37	
18	17	57	37	
19	37		35	
20	16	50	37	

Revised December16, 2019

**Meiji Gakuin University South Gate bus stop**

To Hirashima			Meiji Gakuin University South Gate bus stop Pole 2	
For weekdays			For Saturdays and national holidays	
07	16	46		
08	19	45		04
09	16			09
10	02	36		10
11	16	58		09
12	37			07
13	17	59		07
14	37			07
15	17	50		07
16	39			07
17	25	55		10
18	35			10
19	28	58		12
20	25	54		10
21	35			10
22	30	45		33
23	06			

Revised December16, 2019

■ Enoden Bus Navigator (You can search for the timetable and real-time bus information.)



<http://enoden-bus.bus-navigation.jp/wgsys/wgs/search.htm>

## ■ Telephone Number List

Shirokane Campus		
Student Affairs Section	Extracurricular Activities	03-5421-5155
	Welfare (scholarships etc.)	03-5421-5157
	Guarantor Association Office	03-5421-5158
Academic Affairs Section		03-5421-5140
Educational and Teaching Affairs Section		03-5421-5147
Career Center		03-5421-5162
Teacher Training Center (Teaching Career Services Division)		03-5421-5896
Volunteer Center		03-5421-5131
Library		03-5421-5177
Computing & Information Center		03-5421-5471
International Center		03-5421-5423
Health Support Center		03-5421-5183
Student Counseling Center		03-5421-5241
Student Support Center		03-5421-5182
Office of Christian Activity		03-5421-5218
Finance & Accountant Section		03-5421-5262
Public Relations Division		03-5421-5165
Graduate School Office		03-5421-5180
Alumni Center		03-5421-5650
Palette Zone Management Office		03-5421-5006
Security Station	Main Gate	03-5421-5192
	Main Building	03-5421-5002
	East Gate	03-5421-5003
Meiji Gakuin Co-op		03-3447-1631
Meiji Gakuin Service		03-5421-1555

Yokohama Campus		
Student Affairs Section	Extracurricular Activities	045-863-2030
	Welfare (scholarships etc.)	045-863-2029
Academic Affairs Section (Academic Affairs)		045-863-2025
Academic Affairs Section (Educational and Teaching Affairs)		045-863-2024
Career Center		045-863-2170
Volunteer Center		045-863-2056
Library		045-863-2037
Computing & Information Center		045-863-2044
International Center		045-863-2190
Health Support Center		045-863-2020
Student Counseling Center		045-863-2061
Student Support Center		045-863-2211
Office of Christian Activity		045-863-2016
General Affairs Section (Yokohama)		045-863-2007
Graduate School Office		045-863-2243
Security Station	Main Gate	045-863-2160
	South Gate	045-863-2161
	North Gate	045-863-2162
Meiji Gakuin Co-op	Co-op Shop	045-871-4011
	Support Counter	045-862-4591
Meiji Gakuin Service		045-869-5761

## ■ List of social media run by the Public Relations Division of the university's General Planning and Development Office

[Twitter] Introduces information nearly every day about events in which enrolled students can participate, and the achievements of the students, etc. Transmits urgent announcements from the university.

Account : @MeijiGakuinUniv

URL : <https://twitter.com/meijigakuinuniv>

[Instagram] Expresses the “now” of Meiji Gakuin including classes, extracurricular activities, and campus scenery, etc.

Account : mguniv

URL : <https://www.instagram.com/mguniv/>

[Facebook] Transmits event information and the achievements of students and male and female alumni, etc.

Account : @MeijiGakuinUniversity

URL : <https://www.facebook.com/MeijiGakuinUniversity/>

[Youtube] Transmits “The Reason for Meiji Gakuin.” and other information about Meiji Gakuin by category.

Account : meijigakuin

URL : <https://www.youtube.com/user/meijigakuin/featured>

Twitter in particular is used to send messages to students.

