

■ Volunteer activities

Connect to society and deepen learning

The Volunteer Center is the place where we put into practice the “Do for Others” educational philosophy of Meiji Gakuin University. It provides support so that all volunteers and students with an interest in social issues can enhance their studies through a wide range of activities.

■ We support your willingness to “give it a go”!

○ We introduce the volunteers

There is a lot of volunteer information in the center. Information is announced via Port Hepburn, the Volunteer Center website, and signboards, etc.

○ We offer consultations regarding volunteer activities

University staff and specialist coordinators are able to offer advice. Please feel free to talk to us when you feel that “I want to try volunteering,” “I want to launch a new activity,” and “I have a problem in carrying out my activities.”

■ The first step “1 Day for Others”

For those of you who would like to start by doing something, but don’t know where to start - “1 Day for Others” is a program in which Meiji Gakuin University students visit communities, NPOs, NGOs, companies, etc. near their campus to experience volunteering or interning for one day. We hope you will use this as an opportunity to take action yourself to discover social issues and master a variety of abilities such, as leadership and communication skills, etc.

■ Engage in social activities

The Volunteer Center has incentive systems (*selection required) for students tackling social issues.

Program name	Content
Volunteer Fund Student Challenge	This is a system that provide assistance throughout the year for social activities that students are tackling themselves.
Anytime Volunteer Challenge	This is an incentive system that allows students to apply whenever they want to volunteer, anytime, anywhere.
Disaster Expedition Grant	This is a system that subsidizes transportation and other expenses incurred during disaster recovery support activities.

■ Programs to support your growth

Program name	Content
Volunteer Certificate	Seeing the practice of volunteering as part of university education, this program aims to connect each student’s volunteer activities to their specialized learning, thereby deepening both. If you are thinking about centering your university life on volunteer activities, please aim for the certificate.

■ Obtain “volunteer insurance” when you participate in volunteer activities

Volunteer insurance provides compensation in cases where a volunteer is injured, or causes injury to others, during an activity. For safety’s sake, please ensure that you take out this insurance before participating. Note that we regularly carry out the procedures to take out insurance on your behalf at the Volunteer Center. * The university takes out insurance for “1 Day for Others” and the other programs organized by the Volunteer Center. We ask independently acting volunteers to please take out insurance through the Social Welfare Council, etc.

Volunteer Center

Shirokane TEL 03-5421-5131 (Building 10, 1F)

Yokohama TEL 045-863-2056 (Building 4, 1F)

URL <https://www.meijigakuin.ac.jp/volunteer>

Twitter @mgvc2011

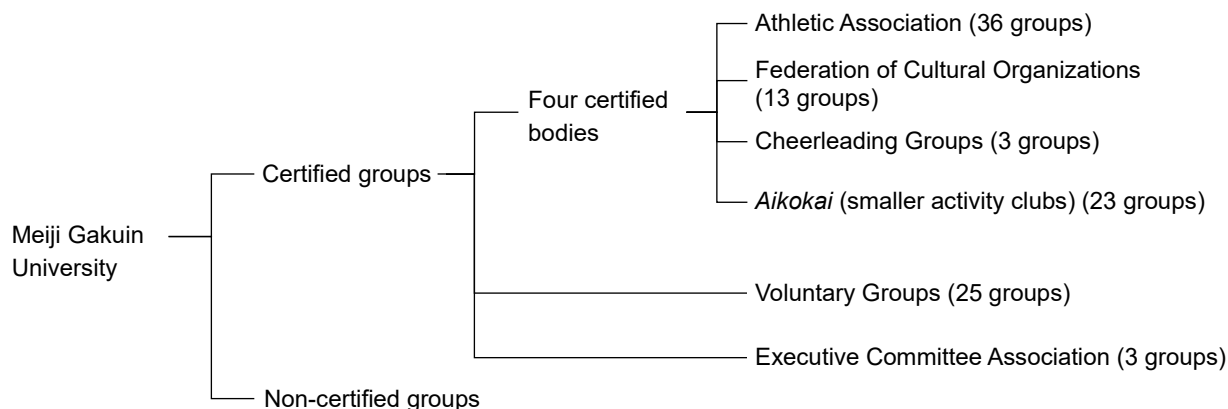
Instagram @mgu_vol

■ Extracurricular activities

The university's extracurricular activities are intended to cultivate a rich humanity in students that promotes responsible behavior by allowing them to participate in independent activities and exchanges. The university students to actively engage in extracurricular activities to enhance student life.

■ Certified groups

In Meiji Gakuin University clubs, there are two types of groups: certified groups and other groups (non-certified groups).



○ Certified groups

Certified groups are clubs that have been officially recognized by the university and that can receive various types of support from the university. They are obligated to submit various notifications and financial reports to the university. The certified groups are further divided into four certified bodies (Athletic Association, Federation of Cultural Organizations, Cheerleading Groups and Appreciation Society) and voluntary groups.

These groups have priority in reservations for classrooms, athletic facilities and cultural facilities, and they receive funding. In addition, even if an injury occurs in their activities outside the university, they are covered by accident insurance if the activity was approved by the Student Affairs Office.

○ Non-certified groups

These groups do not have to submit reports to the university, and they do not receive support from the university. Members are responsible for all their own plans and actions. When these groups engage in activities outside the university, it is up to them to organize their own insurance in case of injuries, etc.

■ Establishment of certified groups

To establish a certified group it is necessary to follow the procedure below.

(First year)

- ① Submit an Application to Prepare for Establishment. (Submission period: April 1 to 30)
- ② If as a result of the screening your group is designated as a group that is preparing for establishment, properly engage in activities for a one-year period.
- ③ Submit an Interim Activities Report. (Submission period: October 1 to 31)

(Second year)

- ④ Submit an Application for Designation as a Certified Group and undergo a screening in order to receive designation as a certified group. (Submission period: April 1 to 15) (Based on the results of the screening, your group might not be recognized as a certified group. If it is recognized, it will be registered among the Voluntary Groups.)

When the Application for Designation as a Certified Group is submitted, the following three criteria must also be satisfied.

- 1) In principle, there must be at least eight members, including members from at least two academic years.
- 2) There is a full-time faculty member as an advisor.
- 3) The group has defined articles of association.

Please contact the Student Affairs Department concerning the application forms, application method and timing, etc.

■ Shirokane Festival

The university festival known as the Shirokane Festival is held at the Shirokane Campus annually from November 1 to November 3.. It provides an opportunity for many groups (both certified and non-certified) to hold performances and other activities.

■ Totsuka Festival

The Totsuka Festival is held at the Yokohama campus annually in late May. This is a community festival produced through the cooperation of students, the local community and university staff. With the overall themes of the environment, social welfare and internationality, the festival is open to the local community.

■ Project to strengthen Meiji Gakuin sports (called the “Sports Project”)

The Sports Project was begun in April 2005 and selects specific strong clubs which are practicing regularly in order to achieve a high quality of play.

■ MG Hakone Ekiden Project

“Get Meiji Gakuin University into the Hakone Ekiden race!” In order to realize this desire, the MG Hakone Ekiden Project was launched in academic year 2020. The track and field team’s long-distance block is training hard with the aim of participating in the Hakone Ekiden.

(Special website: <https://www.meijigakuin.ac.jp/campuslife/ekiden/>)

The Student Affairs Division handles inquiries concerning extracurricular activities.

[Shirokane](#) TEL 03-5421-5155 (Main Building, 1F)

[Yokohama](#) TEL 045-863-2030 (Building 1, 1F)

[URL](https://www.meijigakuin.ac.jp/campuslife/extracurricular_activities/) https://www.meijigakuin.ac.jp/campuslife/extracurricular_activities/

■ Clubs

The clubs active as Meiji Gakuin University certified groups are shown below.

* The content may change after this list has been created due to club disbandment or suspension of activities.

As of January 2022

■ Athletic Association

Approximately 1,400 students are members.

Aikido Club	Figure Skating Club	Ice Hockey Club	American Football Club
Karate Club	Kyudo Club	Competitive Dance Club	Kendo Club
Golf Club	Football Club(Soccer)	Shooting Club	Judo Club
Shorinji Kempo Club	Swim Club	Ski Team	Soft Tennis Club
Table Tennis Club	Lawn Tennis Club	Nanshiki Baseball Club*	Nihon Kempo Club
Men’s Basketball Club	Women’s Basketball Club	Badminton Club	Volleyball Club
Handball Club	Futsal Club	Boxing Club	Motorboat and Waterskiing Club
Baseball Club	Archery Club	Sailing Club	Rugby Club
Men’s Lacrosse Club	Women’s Lacrosse Club	Track and Field Club	Wander Vogel (Rambling) Club

■ Federation of Cultural Organizations

Approximately 800 students are members.

Acoustic Minds	E.S.S (English Speaking Society)	Theater Research Club	Orchestra
Glee Club	L.M.S.	Advertising Society	Child Education Society
Cinema Society	Photography Club	Stage Academy	Literature Club
Mandolin Club			

■ Cheerleading Groups

Approximately 50 students are members.

Leader Club	Cheerleading Club	Brass Band Club
-------------	-------------------	-----------------

■ Appreciation Society (Smaller activity clubs)

Approximately 900 students are members.

Sports	Academic/Cultural	Travel	Music
Austria Ski Club	Announce Kenkyukai	Car Tourist Club	Classic Guitar Society
Shirokane Sports Association	Club Arts	Cycling Club	Light Music Club (L.M.C)
Sports Appreciation Society	Tea Ceremony Club	Sansuikai	CHOR DIE SONNE
Badminton Section			
Playing Tennis Association	Meigaku Little Theater	Travel Society	Symphonic Band
	Rakugo Society	Train Travel Appreciation Society	World Ethnic Music Society
	Habitat MGU	Hiking Appreciation Society	Song Lights
		Remote Island Society	

* As a general rule, 'Appreciation Society' tend to be somewhat smaller, newer and more informal than associations and organizations.

■ Executive Committee Association

Approximately 250 students are members.

Shirokane Festival Executive Committee	Totsuka Festival Preparation Committee	Freshmen Orientation Executive Council
--	--	--

■ Voluntary Groups

Approximately 1,800 students are members.

Sports	Academic, Cultural	Society, Social Welfare, International
Shirokane Football Club (soccer)	Contemporary Music Club	Sign Language Club Pokke
Shirokane Shukyukai (soccer)	Jazz Society	JUNKO Association
STING	Shirokane Bell Harmony Ringers	Peace ☆ Ring
Orange Tennis Club	Hepburn Bible Society	pocket
Volleyball Club Cherries	Manga Society UCA	OPEN ROOM
AKUSTOT	Shohokai	Braille Transcription Society
Break Jam	Gospel Choir	
Sports SHOW ☆GO!!!	Musik Spiel	
Hula Circle Lokahi	KENDAMA Club	
	Entertainment Circle R.I.E.	